



Davies Symphony Hall
201 Van Ness Avenue
San Francisco, CA 94102

NONPROFIT
U.S. POSTAGE PAID
SAN FRANCISCO, CA
PERMIT NO. 471



2012|2013SEASON

3+

Choose three or more
concerts and save!

NOTHING BEATS **FLEXIBILITY** | **CHOICE** | **SAVINGS**

SFSYMPHONY.ORG/CYO

Like us on  [SFSYMPHONY](https://www.facebook.com/SFSYMPHONY)  [@SFSYMPHONY](https://twitter.com/SFSYMPHONY)

2012|2013SEASON

COMPOSE
YOUR OWN
MUSIC
SEASON

NOTHING BEATS BEING **HERE**

3+

CHOOSE
THREE
OR MORE
CONCERTS
AND **SAVE!**



THE SAN FRANCISCO
SYMPHONY SALUTES ITS
MAJOR PARTNERS

SECOND CENTURY PARTNERS



Inaugural Partner



MAJOR CORPORATE PARTNERS



Bank of America



Official Airline

FRANKLIN TEMPLETON
INVESTMENTS

McKESSON
Empowering Healthcare

THE
MORRISON | FOERSTER
FOUNDATION

VISA

THE WESTIN
ST. FRANCISCO
SAN FRANCISCO
ON UNION SQUARE
Preferred Hotel Partner

WILLIAM HILL
ESTATE WINERY
Official Wine

MEDIA PARTNERS

San Francisco Chronicle
SFGate.com



Radio Home of the San Francisco Symphony

PUBLIC FUNDING

S F A C San Francisco
Arts Commission



ART WORKS.
artworks.org



NOTHING BEATS **FLEXIBILITY** | **CHOICE** | **SAVINGS**

COMPOSE YOUR OWN

CREATE THE SEASON YOU WANT TO HEAR.

Michael Tilson Thomas and the San Francisco Symphony invite you to a season of fierce virtuosity and blazing passion.

Create the season you want to hear with a Compose Your Own package at the San Francisco Symphony! Flexible, affordable, and made for you, by you.

Simply choose three or more performances from the concerts listed in this brochure to create your package. Choose your favorite artists and programs, select the days that work for your schedule, and sit in a section that fits your budget.

Order today—because nothing beats being at the San Francisco Symphony!

SFSYMPHONY.ORG/CYO
(415) 864-6000



Enjoy all the benefits of a subscription,
and you choose the concerts!

SPECIAL UPGRADE

» Take advantage of this special perk! Use a free one-time seat upgrade coupon, good for most performances.

EASY EXCHANGES

» If your schedule changes, there is no need to miss the music. You have several easy ticket exchange options. Exchange your tickets in advance by mail or in person for free. And, phone and fax exchanges are available for a nominal fee.

EXCLUSIVE SAVINGS

» Save up to \$10 on each concert ticket, plus lock in your subscriber-only price for additional performances throughout the season.

CONVENIENT PARKING

» Reserve pre-paid parking for all your concerts in the Performing Arts Garage, located half a block from Davies Symphony Hall.

CHOOSE FROM THESE CONCERTS TO COMPOSE YOUR OWN SEASON



ZUKERMAN

WED SEP 5 8PM
THU SEP 6 8PM
FRI SEP 7 8PM
SAT SEP 8 8PM

BYCHKOV CONDUCTS TCHAIKOVSKY'S FIFTH SYMPHONY

Semyon Bychkov conductor
Pinchas Zukerman violin
San Francisco Symphony

Wagner Overture to *Tannhäuser* ◀
Bruch Violin Concerto No. 1 ◀
Tchaikovsky Symphony No. 5

Semyon Bychkov and Pinchas Zukerman join the Orchestra to open the season. The gorgeous melodies of Bruch's opus glow in the hands of the elegant Zukerman. Just months after worrying that he was "played out" at 48, Tchaikovsky completed his Fifth Symphony, a work unmatched in charting the journey from emotional melancholy to the triumph of the spirit.

Sponsored by FRANKLIN, TEMPLETON,
INVESTMENTS



BYCHKOV

WED SEP 12 8PM
THU SEP 13 2PM
FRI SEP 14 8PM
SAT SEP 15 8PM

BYCHKOV CONDUCTS SHOSTAKOVICH

Semyon Bychkov conductor
San Francisco Symphony

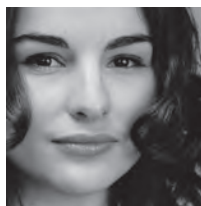
Shostakovich Symphony No. 7, *Leningrad* ◀

Shostakovich began his heroic *Leningrad* Symphony in 1941 following the German army's siege of Leningrad. The mesmerizing and heroic score quickly made its way to New York where the famously anti-fascist Toscanini conducted the American premiere. Leningrad-born conductor Semyon Bychkov brings profound understanding to the work.

Please note there is no intermission.

The Thursday Matinee concerts are endowed by a gift in memory of Rhoda Goldman.

Sponsored by FRANKLIN, TEMPLETON,
INVESTMENTS



POGOSTKINA

SUN SEP 23 2PM

MTT CONDUCTS BOLÉRO

Michael Tilson Thomas conductor
Alina Pogostkina violin
San Francisco Symphony

Berlioz Selections from *Romeo and Juliet*
Chausson *Poème*
Saint-Saëns Introduction and Rondo capriccioso
Ravel *Boléro*

A festive afternoon of torrid French passion ranges from the teenage lovers of Verona, by way of Berlioz, to the red hot sensuality of Ravel's dramatic and wildly popular score. The poignant music of Chausson and the popular work by Saint-Saëns are in the charming hands of Alina Pogostkina, making her SFS debut.



TILSON THOMAS

FRI SEP 28 8PM

SAT SEP 29 8PM

SUN SEP 30 2PM

MTT CONDUCTS MAHLER'S FIFTH SYMPHONY

Michael Tilson Thomas conductor
San Francisco Symphony

Samuel Carl Adams *Drift and Providence* (West Coast Premiere)
Mahler Symphony No. 5

Michael Tilson Thomas pairs a work from a composer with Bay Area roots with a Mahler treasure. "What is the public to make of this ... foaming, roaring, raging sea of sound?" wondered Mahler, who wished he could postpone the Fifth Symphony's premiere until the world would be ready to embrace it. Its gorgeous Adagietto is a love note in a bottle on that storm-tossed sea.



PETRENKO

THU OCT 4 2PM

FRI OCT 5 8PM

SAT OCT 6 8PM

PETRENKO CONDUCTS RESPIGHI

Vasily Petrenko conductor
Jean-Efflam Bavouzet piano
San Francisco Symphony

Arvo Pärt *Fratres*
Bartók Piano Concerto No. 3
Respighi *Fountains of Rome* (*Fontane di Roma*)
Respighi *Pines of Rome* (*Pini di Roma*)

Anchoring this concert brimming with evocative imagery is Bartók's concerto, whose sheer vibrancy belies the mortal illness he suffered while composing it. Respighi imbued his fountains with the majesty of the sea gods they celebrate, and his pines with the grace of the nightingales they shelter, and the power of the Roman Legions who once marched beneath them.

The Thursday Matinee concerts are endowed by a gift in memory of Rhoda Goldman.

» "Petrenko's physical technique is so crisp and graceful—a combination of a clear rhythmic beat and simple but expressive gestures." —SAN FRANCISCO CHRONICLE

**PAY LESS**

Savvy Compose-Your-Own subscribers get up to \$10 off regular prices, and lock in that pricing throughout the season.

PROJECT
SAN FRANCISCO

SCHIFF

SUN OCT 7 2PM

THE SAN FRANCISCO SYMPHONY PRESENTS GREAT PERFORMERS

ANDRÁS SCHIFF PLAYS BACH

András Schiff piano

Bach *Well-Tempered Clavier*, Book I

Bay Area audiences have multiple opportunities to savor performances of this masterful artist interpreting Bach's keyboard works. His Project San Francisco appearances start with his reading of Book I of Bach's *Well-Tempered Clavier*, a keyboard collection considered one of Western music's greatest achievements. Hear the entire masterpiece in two concerts, October 7 and 21.

Co-presented by the San Francisco Symphony and San Francisco Performances.

Presenting Sponsor
 Great Performers Series

PROJECT
SAN FRANCISCO

SCHIFF

THU OCT 11 8PM

FRI OCT 12 6:30PM

SAT OCT 13 8PM

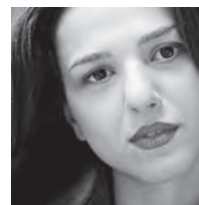
ANDRÁS SCHIFF CONDUCTS BACH AND MENDELSSOHN

András Schiff conductor and piano
San Francisco Symphony

Mendelssohn *Fingal's Cave Overture*
Bach Keyboard Concerto No. 2
Bach Keyboard Concerto No. 1
Mendelssohn Symphony No. 4, *Italian*

The young Mendelssohn toured Europe extensively, forming impressions that were inseparable from his musical imagination. He captured the immense beauty and power of a Scottish seaside cave in his overture, and the exuberance of Italy in his delightful Symphony. András Schiff—Project San Francisco artist and one of the world's most esteemed interpreters of Bach—conducts two captivating concertos from the keyboard.

» "There is nothing more reliable in the world of classical music today than pianist András Schiff playing Bach." —THE NEW YORK TIMES



BUNIATISHVILI

THU OCT 18 8PM

FRI OCT 19 8PM

SAT OCT 20 8PM

IVAN THE TERRIBLE

Vladimir Jurowski conductor
Larissa Diadkova mezzo-soprano
Andrey Breus baritone
Khatia Buniatishvili piano
San Francisco Symphony and Chorus

Scriabin *Reverie*
Rachmaninoff Piano Concerto No. 2
Prokofiev (Arr. Atovmyan) *Ivan the Terrible* (US Premiere)

Maestro Jurowski debuts with the SFS in a program featuring music by two sons of Russia. Rachmaninoff's gorgeous concerto was composed following a period of great sadness. Prokofiev's gripping work was originally the score to a film about Russia's first Tsar, a leader with a dark past. Jurowski leads the US premiere of a new arrangement of Prokofiev's final film score.

» ANDRÁS SCHIFF PLAYS BACH
OCTOBER 7
OCTOBER 11-13
OCTOBER 21
APRIL 14
APRIL 21

CHOOSE THREE OR MORE AND **SAVE!**



SCHIFF

SUN OCT 21 2PM

THE SAN FRANCISCO SYMPHONY PRESENTS GREAT PERFORMERS

ANDRÁS SCHIFF PLAYS BACH

András Schiff piano

Bach *Well-Tempered Clavier*, Book II

The Washington Post hailed a recital by pianist Andras Schiff as "one of the great musical events of the season." Schiff, a Project San Francisco artist, continues his recital appearances here with Book II of Bach's *Well-Tempered Clavier*: in whole, 48 compositions that are nothing short of miraculous. Hear the entire masterpiece in two concerts, October 7 and 21.

Co-presented by the San Francisco Symphony and San Francisco Performances.

Presenting Sponsor
Great Performers Series



VAN ZWEDEN

THU OCT 25 2PM

FRI OCT 26 8PM

SUN OCT 28 2PM

VAN ZWEDEN CONDUCTS BRAHMS'S FOURTH SYMPHONY

Jaap van Zweden conductor

David Fray piano

San Francisco Symphony

Wagner Prelude to Act I of *Lohengrin* »

Mozart Piano Concerto No. 22

Brahms Symphony No. 4

Fray and Van Zweden, says the BBC, "work together with remarkable symbiosis." Mozart's sprightly concerto is familiar today from the film *Amadeus*. Toward the end of the 19th century, one was either a Wagnerian or a Brahms fan; today, we can happily enjoy both giants. Brahms's energetic Fourth Symphony is wistful, rambunctious, and totally fulfilling.

The Thursday Matinee concerts are endowed by a gift in memory of Rhoda Goldman.



WANG

SAT OCT 27 8PM

YUJA WANG AND THE SAN FRANCISCO SYMPHONY

Michael Tilson Thomas conductor

Yuja Wang piano

San Francisco Symphony

Shostakovich Piano Concerto No. 2

Mahler Symphony No. 5

The New York Times declares that pianist Yuja Wang "is a thoughtful musician with an ear for color, texture, and harmony." She is also a fiery, exciting artist, and she joins the San Francisco Symphony for a special concert in advance of the Orchestra's tour to Asia. In addition to her performance of the Second Piano Concerto of Shostakovich, unusually cheerful by his own standards, the Orchestra performs Mahler's raging and riveting Fifth Symphony.



WANG

WED OCT 31 8PM

MTT CONDUCTS PROKOFIEV AND RACHMANINOFF

Michael Tilson Thomas conductor

Yuja Wang piano

San Francisco Symphony

Mark Volkert *Pandora* (World Premiere)

Prokofiev Piano Concerto No. 2

Rachmaninoff Symphony No. 2

A world premiere from the Orchestra's Assistant Concertmaster, Mark Volkert, opens a dynamic program. Prokofiev's concerto is notoriously difficult, but when Yuja Wang last performed the work here, the *Mercury News* reported, "After each movement, conductor Michael Tilson Thomas turned toward the pianist to ... give a little gasping 'wow.'" Rachmaninoff was an extraordinary melodist; one of the tunes from his Second Symphony enjoyed a second life as a rock hit in the '70s.

"[Schiff is] a probing, complete and utterly honest artist, a pianist who knows what he is doing: a master."

—THE NEW YORK TIMES

2012|2013 SEASON

ORDER (415) 864-6000 SFSYMPHONY.ORG



LANG LANG

THU NOV 1 8PM
FRI NOV 2 8PM

MTT AND LANG LANG

Michael Tilson Thomas conductor
Lang Lang piano
San Francisco Symphony

Mark Volkert *Pandora* (World Premiere)
Bartók Piano Concerto No. 2
Rachmaninoff Symphony No. 2

A world premiere from the Orchestra's Assistant Concertmaster, Mark Volkert, opens a dynamic program. The extraordinary Lang Lang returns to the SFS to perform Bartók's notoriously difficult yet immensely popular Second Piano Concerto. Rachmaninoff was an extraordinary melodist; one of the tunes from his Second Symphony enjoyed a second life as a rock hit in the '70s.

» "The ebullient Lang Lang is maturing as an artist ... his playing is refined, almost severe. He has an intelligent way of shaping phrases, controlling dynamics, varying articulations." —THE NEW YORKER

November 1 sponsored by blue of california



WIT

SUN NOV 11 7PM

THE SAN FRANCISCO SYMPHONY PRESENTS GREAT PERFORMERS

WARSAW PHILHARMONIC ORCHESTRA PLAYS CHOPIN AND TCHAIKOVSKY

Antoni Wit conductor
Yulianna Avdeeva piano
Warsaw Philharmonic Orchestra

Chopin Piano Concerto No. 2
Tchaikovsky Symphony No. 6, *Pathétique*

The Warsaw Philharmonic is one of the oldest musical institutions in Europe. Devastating consequences from World War II nearly halted their music, but the orchestra rebounded, and now tours the world, records, and welcomes the world's finest artists to its stage. Its first program here brings the second piano concerto of native son Chopin, as well as Tchaikovsky's final symphony, the moving *Pathétique*.

Presenting Sponsor
Great Performers Series



AVDEEVA

MON NOV 12 7PM

THE SAN FRANCISCO SYMPHONY PRESENTS GREAT PERFORMERS

WARSAW PHILHARMONIC ORCHESTRA PLAYS BEETHOVEN AND DVOŘÁK

Antoni Wit conductor
Yulianna Avdeeva piano
Warsaw Philharmonic Orchestra

Beethoven Piano Concerto No. 5, *Emperor*
Dvořák Symphony No. 8

The 2010 winner of the International Chopin Piano Competition, Yulianna Avdeeva, joins the Philharmonic in Beethoven's wildly popular *Emperor* Concerto, and the orchestra performs Dvořák's vivid Eighth Symphony.

Presenting Sponsor
Great Performers Series



BRONFMAN

WED DEC 5 8PM
FRI DEC 7 8PM
SAT DEC 8 8PM

MTT CONDUCTS SYMPHONIE FANTASTIQUE

Michael Tilson Thomas conductor
Yefim Bronfman piano
San Francisco Symphony

Jörg Widmann Piano Concerto
Berlioz *Symphonie fantastique*

Jörg Widmann's concerto is performed here by Grammy® award-winning pianist Yefim Bronfman. Having fallen hopelessly in love, the young Berlioz tried to woo his love with a phantasmagorical composition. Light-years ahead of its time, the huge and endlessly colorful symphony is one of the most popular—and evergreen—works in the canon.

» "It's safe to say there is no pianist around remotely like Yefim Bronfman. Labor doesn't seem to ever enter the equation; he is simply everywhere, instantly and all the time." —THE PHILADELPHIA INQUIRER

Sponsored by



BOHLIN

THU DEC 13 7:30PM
FRI DEC 14 7:30PM
SAT DEC 15 7:30PM

HANDEL'S MESSIAH

Ragnar Bohlin conductor
Joëlle Harvey soprano
Jennifer Johnson-Cano mezzo-soprano
Andrew Stenson tenor
Michael Sumuel bass-baritone
San Francisco Symphony and Chorus

Handel *Messiah*

Few pieces can deliver a fresh perspective each time they are heard. Handel's *Messiah* yields a new secret on every hearing. Composed in 1741, it reportedly was a favorite work of Beethoven for its "sublimity of language." For modern listeners, it holds a place of reverence in the canon for its universal appeal and timeless expression.



GO DEEPER

Learn more about the music at our free Inside Music talks one hour prior to concerts. Or, listen to our engaging podcasts about the music, at sfsymphony.org/podcasts.

» RENÉE FLEMING
JANUARY 10, 12, 13
JANUARY 16

CHOOSE THREE OR MORE AND **SAVE!**



PROJECT
SAN FRANCISCO

FLEMING

THU JAN 10 8PM

SAT JAN 12 8PM

SUN JAN 13 2PM

MTT AND RENÉE FLEMING

Michael Tilson Thomas conductor
Renée Fleming soprano
San Francisco Symphony

Debussy *Jeux*
Debussy (Arr. Holloway) *Ariettes oubliées*
(San Francisco Symphony Commission, World Premiere)
Debussy *La Plus que lente*
Canteloube Selections from *Chants d'Auvergne*
Debussy *La Mer*

A program rich in the vivid impressionism of Debussy includes one of his most alluring works, sung by America's regal soprano, Renée Fleming. Throughout his life, Debussy retained a "passionate love" for the sea, and his shimmering, crashing depiction of it has dazzled listeners for more than a century.



PROJECT
SAN FRANCISCO

GRAHAM

WED JAN 16 7PM

THE SAN FRANCISCO SYMPHONY PRESENTS GREAT PERFORMERS

RENÉE FLEMING AND SUSAN GRAHAM

Renée Fleming soprano
Susan Graham mezzo-soprano
Bradley Moore piano

Works by Chausson, Debussy, Fauré, and more

The evening's collaboration between two celebrated American singers promises an experience of pure delight. Fleming, with her "plush, opulent soprano" (*The Star-Ledger*), and Graham, possessed of "a voice that abounds in expressive colors" (*Cleveland Plain Dealer*), join forces for a program of delightful French art songs and more.

Presenting Sponsor
Great Performers Series



TILSON THOMAS

THU JAN 17 8PM

FRI JAN 18 8PM

SAT JAN 19 8PM

MTT CONDUCTS MUSIC FROM PEER GYNT

Michael Tilson Thomas conductor
San Francisco Symphony and Chorus

Grieg Incidental Music for Ibsen's *Peer Gynt*
Various Music from *Peer Gynt*

Ibsen asked Grieg to compose music for *Peer Gynt*, his dramatic poem about a very bad boy and his redemption through the love of a very good woman. Grieg crafted a passel of expressive themes that have gained worldwide fame through his short orchestral suite. The SFS, soloists, and Chorus perform extended selections from the thrilling, rarely heard full score with staging, evocative lighting, and dramatic elements. As an added bonus, music by other composers, including Alfred Schnittke and Robin Holloway and inspired by *Peer Gynt*, will be intermingled with Grieg's famous score.

Supported by the Barbro and Bernard Osher Staged Production Fund.

"Perfect voice, endless breath, sensual tone ... [Fleming] is sheer perfection." —LE MONDE



BARANTSCHIK

WED JAN 23 8PM
THU JAN 24 2PM
FRI JAN 25 6:30PM
SAT JAN 26 8PM

BARANTSCHIK PLAYS CONCERTOS AND SERENADES

Alexander Barantschik leader and violin
Catherine Payne piccolo
Jonathan D. Fischer oboe
San Francisco Symphony

Vivaldi Piccolo Concerto
Bach Violin Concerto in A minor
Mozart Divertimento in D major for Strings
Bach Concerto in D minor for Violin and Oboe
Mozart Serenade No. 6, *Serenata notturna*

Three Orchestra members step into the spotlight in sparkling solo turns. Vivaldi's style greatly influenced Bach, whose concertos are among the most mellifluous to emerge from the Baroque era. Mozart loved a party and wrote charming serenades and divertimentos to be performed at those often stately occasions—including this serenade from 1776.

The Thursday Matinee concerts are endowed by a gift in memory of Rhoda Goldman.



DUTOIT

WED JAN 30 8PM
FRI FEB 1 8PM

DUTOIT CONDUCTS ELGAR'S ENIGMA VARIATIONS

Charles Dutoit conductor
James Ehnes violin
San Francisco Symphony

Ravel *Rapsodie espagnole*
Lalo *Symphonie espagnole*
Elgar *Enigma Variations*

The savory works of Lalo and Ravel provide tantalizing tastes of their backgrounds—Lalo's Spanish heritage and Ravel's Basque lineage. Canadian violinist James Ehnes, who's been called "the Heifetz of our day," shines in Lalo's concerto. Englishman Elgar's Variations sketch characteristics of his friends and explore friendship's enigma. The stately *Nimrod* variation has achieved anthem status.

» "[Dutoit's] bright hues take on an almost blinding gleam, softer ones have a velvety glow, and dynamics are expanded similarly." —THE NEW YORK TIMES



WALL

WED FEB 6 8PM
THU FEB 7 8PM
SAT FEB 9 8PM
SUN FEB 10 2PM

DUTOIT LEADS BERLIOZ'S TE DEUM

Charles Dutoit conductor
Erin Wall soprano
Paul Groves tenor
Pacific Boychoir, Kevin Fox director
San Francisco Symphony and Chorus

Poulenc *Stabat Mater*
Berlioz *Te Deum*

Charles Dutoit returns to conduct works which showcase the superb SFS Chorus. Poulenc composed his *Stabat Mater* as an outlet for his own grief following a friend's passing. Berlioz wrote that the finale of his colossal *Te Deum* "surpasses all the enormities I have ever been guilty of before." This astonishing, seldom performed work may be the best-kept secret of the Romantic era.

» "Erin Wall delivered the finest singing of the evening with sensitive, rich-toned, and expressively detailed vocalism." —THE CLASSICAL REVIEW



SHAHAM

FRI FEB 8 8PM

THE SAN FRANCISCO SYMPHONY PRESENTS GREAT PERFORMERS

GIL SHAHAM IN RECITAL

Gil Shaham violin
Akira Eguchi piano

Walton Violin Sonata
Bach Partita No. 3 for solo violin
William Bolcom New Work (San Francisco Symphony Premiere)
Beethoven Violin Sonata No. 9, *Kreutzer*

Long a favorite concerto soloist of SFS audiences, violinist Gil Shaham, "a brilliant and passionate player" (*Musical America*), presents a solo recital to showcase his exquisite playing and engaging persona.

Presenting Sponsor
Great Performers Series



SUMMERS

TUE FEB 12 8PM

THE SAN FRANCISCO SYMPHONY PRESENTS GREAT PERFORMERS

RUSSIAN NATIONAL ORCHESTRA

Patrick Summers conductor
Daniil Trifonov piano
Russian National Orchestra

Smetana Overture to *The Bartered Bride*
Tchaikovsky Piano Concerto No. 1
Dvořák Symphony No. 6

When the Russian National Orchestra made its 1996 debut at the BBC Proms in London, the *Evening Standard* wrote, "They played with such captivating beauty that the audience gave an involuntary sigh of pleasure." Hear this magnificent orchestra when it returns, conducted by Patrick Summers. The orchestra shines in a program featuring Smetana's blazing overture, Tchaikovsky's thrilling concerto, and Dvořák's beautiful symphony.

Presenting Sponsor
Great Performers Series



TRIFONOV

WED FEB 13 8PM

THE SAN FRANCISCO SYMPHONY PRESENTS GREAT PERFORMERS

RUSSIAN NATIONAL ORCHESTRA

Patrick Summers conductor
Daniil Trifonov piano
Russian National Orchestra

Verdi Overture to *I vespri siciliani*
Prokofiev Piano Concerto No. 3
Tchaikovsky Symphony No. 4

Back in San Francisco for the first visit since 2008, the Russian National Orchestra performs a program rich in Russian flavor. Prokofiev's Third Piano Concerto is the most popular of his five concertos, while Tchaikovsky's deeply personal Symphony No. 4 gives voice to his internal torment.

Presenting Sponsor
Great Performers Series



MAKE IT SPECIAL

Enjoy cocktails before your concert, or take advantage of the many great Hayes Valley restaurants to make a truly special night out.



HERAS-CASADO

THU FEB 14 2PM
FRI FEB 15 8PM
SAT FEB 16 8PM
SUN FEB 17 2PM

HERAS-CASADO CONDUCTS PROKOFIEV'S FIFTH SYMPHONY

Pablo Heras-Casado conductor
Stephen Hough piano
San Francisco Symphony

Magnus Lindberg *EXPO* (West Coast Premiere)
Liszt Piano Concerto No. 2
Prokofiev Symphony No. 5

The gestations of Liszt's concerto and Prokofiev's symphony could not have been more different. Liszt took 22 years to compose and revise (and revise again) his sublime, single-movement concerto, while Prokofiev finished his vivid yet deeply ironic symphony in one month. Lindberg's *EXPO*, lauded in its New York premiere, shows off the orchestra.

The Thursday Matinee concerts are endowed by a gift in memory of Rhoda Goldman.

» "[Heras-Casado is a] superb new podium talent, with a fluidly expressive technique, a fine ear for sonorities, and suave rhythmic command."

—SAN FRANCISCO CHRONICLE



PERLMAN

SUN FEB 17 7PM

THE SAN FRANCISCO SYMPHONY PRESENTS GREAT PERFORMERS

ITZHAK PERLMAN IN RECITAL

Itzhak Perlman violin
Rohan de Silva piano

Works by Mozart, Beethoven, and Brahms

A player of legendary renown, Itzhak Perlman is a musician who exceeds mere superlatives. He is a superstar, a musician of technical wizardry, an interpreter of unmatched grace and power—a legend. He returns to San Francisco to take the stage at Davies Symphony Hall as part of the Great Performers Series, and lucky the listeners who hold tickets to his highly anticipated recital performance.

Presenting Sponsor
Great Performers Series



TORTELIER

THU FEB 21 2PM
FRI FEB 22 8PM
SAT FEB 23 8PM

TORTELIER CONDUCTS MENDELSSOHN

Yan Pascal Tortelier conductor
William Bennett oboe
San Francisco Symphony

Debussy (Orch. Büsser) *Petite Suite*
R. Strauss Oboe Concerto
Mendelssohn Symphony No. 1

Mendelssohn's first symphony was written at the sunrise of his career—he was 15 when he composed the imaginative work. By contrast, Strauss was in the sunset of his compositional life when he produced the Oboe Concerto. But what a gloriously radiant sunset it is. SFS Principal Oboe William Bennett does the honors in the lovely concerto.

The Thursday Matinee concerts are endowed by a gift in memory of Rhoda Goldman.

» YUJA WANG
OCTOBER 27
OCTOBER 31
MARCH 6, 8, 9

"[Wang has] practically superhuman keyboard technique with artistic eloquence that is second to none."

—SAN FRANCISCO CHRONICLE



TILSON THOMAS

THU FEB 28 8PM
FRI MAR 1 6:30PM
SAT MAR 2 8PM

MTT CONDUCTS MOZART AND BRUCKNER

Michael Tilson Thomas conductor
San Francisco Symphony

Mozart Selections from *Zaïde*
Bruckner Symphony No. 7

It would be hard to find two composers more unlike each other than Mozart, the prodigy, and Bruckner, whom success eluded until he was 60. Fragments of Mozart's unfinished opera *Zaïde*, found after his death, include a particularly exquisite soprano aria. The premiere of Bruckner's grand Seventh Symphony, with its plaintive adagio, earned a 15-minute ovation.



WANG

WED MAR 6 8PM
FRI MAR 8 8PM

DAVIES
AFTER
HOURS

SAT MAR 9 8PM

MTT AND YUJA WANG: BERIO, BEETHOVEN, BRAHMS

Michael Tilson Thomas conductor
Yuja Wang piano
San Francisco Symphony

Berio *Eindrücke*
Beethoven Piano Concerto No. 4
Brahms Symphony No. 1

Yuja Wang, a firebrand whose "artistic eloquence," says the *Chronicle*, "is second to none," applies her "superhuman" hands to Beethoven's poetic Piano Concerto. Brahms took 20 years to complete his First Symphony, the dramatic opening of which boldly announces the torrent of emotions—and melodies—finally released.

Davies After Hours, a post-concert music event, begins immediately after the March 8 concert in the Second Tier lobby-turned-lounge. Free to ticketholders.

» *"[Wang] seems to have everything: speed, flexibility, pianistic thunder, and interpretive nuance."* —THE NEW YORK TIMES

Sponsored by



TILSON THOMAS

THU MAR 14 2PM
FRI MAR 15 8PM
SAT MAR 16 8PM
SUN MAR 17 2PM

MTT CONDUCTS MAHLER'S NINTH SYMPHONY

Michael Tilson Thomas conductor
San Francisco Symphony

Mahler Symphony No. 9

By 1909, when Mahler penned his Ninth Symphony, he had tragically lost his four-year-old daughter and learned of his own terminal heart ailment. The last symphony he completed, the Ninth, is a defiant affirmation of life as well as a poignant acceptance of mortality. It was with this music that MTT began his storied SFS career in 1974.

Please note there is no intermission.

The Thursday Matinee concerts are endowed by a gift in memory of Rhoda Goldman.

» *"There aren't many musical sure bets these days as sure as a Mahler symphony from Michael Tilson Thomas and the San Francisco Symphony."*

—SAN FRANCISCO CHRONICLE



LABADIE

FRI APR 5 8PM
SAT APR 6 8PM

LABADIE CONDUCTS MOZART AND HANDEL

Bernard Labadie conductor
Lydia Teuscher soprano
Nicholas Phan tenor
San Francisco Symphony and Chorus

Mozart *Ave verum corpus*
Mozart Symphony No. 39
Handel *Ode for St. Cecilia's Day*

Mozart composed his angelic motet less than six months before his death. Handel composed a tribute to St. Cecilia, the Patron Saint of Music, in nine days. Music, Handel says, was present at the world's creation. "What passion cannot Music raise and quell?" Nary a one, as evidenced by this sublime celebration.

» *"[Phan is] vocally and dramatically at the level of the finest international artists."*

—CHICAGO SUN-TIMES



BLOMSTEDT

THU APR 11 2PM
FRI APR 12 6:30PM
SAT APR 13 8PM
SUN APR 14 2PM

BLOMSTEDT CONDUCTS BEETHOVEN, WAGNER, AND LINDHOLM

Herbert Blomstedt conductor
San Francisco Symphony

Wagner Prelude and *Liebestod* from *Tristan und Isolde*
Ingvar Lidholm *Poesis*
Beethoven Symphony No. 3, *Eroica*

Here is a program of stirring tension. In composing the opera *Tristan und Isolde*, Wagner was clear about his intent: "I shall erect a memorial to this loveliest of all dreams in which, from the first to the last, love shall, for once, find utter repletion." Beethoven's ferociously powerful Third Symphony showcases enormous depth and breadth of emotion.

The April 14 concert benefits the Orchestra Pension Fund.

The Thursday Matinee concerts are endowed by a gift in memory of Rhoda Goldman.

PROJECT
SAN FRANCISCO

SCHIFF

SUN APR 14 7PM

THE SAN FRANCISCO SYMPHONY PRESENTS GREAT PERFORMERS

ANDRÁS SCHIFF PLAYS BACH

András Schiff piano

Bach *French Suites*

András Schiff "would make Bach proud," asserts *New York Magazine*. Schiff's Project San Francisco appearances—as well as his overall professional devotion—center on performances of Bach's keyboard music. In his first spring recital, Schiff explores the *French Suites* of Bach, an early work that has little to do with France, and everything to do with Bach's genius in creating complex yet inviting and eminently listenable music. Hear Schiff's final spring recital on April 21.

Co-presented by the San Francisco Symphony and San Francisco Performances.

Presenting Sponsor
Great Performers Series



GET CLOSER

As a subscriber, use your free seat upgrade coupon to get closer to your favorite artists or your most beloved music.

» JULIA FISCHER PLAYS
BEETHOVEN'S VIOLIN CONCERTO
APRIL 17, 19-20

CHOOSE THREE OR MORE AND **SAVE!**



FISCHER

WED APR 17 8PM
FRI APR 19 8PM
SAT APR 20 8PM

JULIA FISCHER PLAYS BEETHOVEN'S VIOLIN CONCERTO

Herbert Blomstedt conductor
Julia Fischer violin
San Francisco Symphony

Beethoven Violin Concerto
Nielsen Symphony No. 5

The immensely talented Julia Fischer, the 2007 *Gramophone* Artist of the Year, returns to perform Beethoven's glorious Violin Concerto. The sweep and military feel of Nielsen's epic Fifth Symphony suggest a deeply felt response to World War I. Maestro Blomstedt is one of the world's foremost interpreters of his work.

» "[Fischer] plays with a remarkably sweet tone (evoking melting caramel perhaps) and long, refined phrases that have an operatic quality to them."

—THE NEW YORK TIMES



PROJECT
SAN FRANCISCO
SCHIFF

SUN APR 21 2PM

THE SAN FRANCISCO SYMPHONY PRESENTS GREAT PERFORMERS

ANDRÁS SCHIFF PLAYS BACH

András Schiff piano

Bach *English Suites*

Pianist Andras Schiff concludes his Project San Francisco appearances with his presentation of Bach's *English Suites*. This is an early work thought to be named for a presumptive recipient of the manuscripts, but there is no mystery in the brilliance of the music itself—highly virtuosic, rigorously structured, yet a thrill to hear when performed by a master Bach interpreter. Hear Schiff's first spring recital on April 14.

Co-presented by the San Francisco Symphony and San Francisco Performances.

Presenting Sponsor
Great Performers Series



ESCHENBACH

THU APR 25 8PM
FRI APR 26 8PM
SAT APR 27 8PM

ESCHENBACH CONDUCTS DVOŘÁK

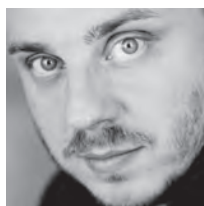
Christoph Eschenbach conductor
Matthias Goerne baritone
San Francisco Symphony

Wagner "Die Frist ist um" from *The Flying Dutchman*
Wagner *Wotan's Farewell* from *Die Walküre*
Dvořák Symphony No. 9, *From the New World*

Heart-racing melodies abound in the symphony Dvořák composed while living in New York City, which he hailed, in 1892, for its "lovely buildings and beautiful streets and everywhere, the greatest cleanliness." The ecstatic symphony remains among the most popular ever penned.

"If there is a more exciting and yet thoughtful fiddler of [Fischer's] generation, we have yet to hear about them."

—GRAMOPHONE



GOERNE

SUN APR 28 7PM

THE SAN FRANCISCO SYMPHONY PRESENTS GREAT PERFORMERS

MATTHIAS GOERNE AND CHRISTOPH ESCHENBACH

Matthias Goerne baritone
Christoph Eschenbach piano

Schubert *Winterreise*

Highly praised for his warm, fluid baritone voice and his profound interpretations, Matthias Goerne is one of the most internationally sought-after vocalists. In his SFS recital debut, he teams with renowned conductor and pianist—and frequent musical collaborator—Christoph Eschenbach. Their previous recital appearances have been praised for their “insight, dramatic intensity, and ... artistry” (*Chicago Classical Review*).

Please note there is no intermission.

» “[Goerne’s] dynamic range is huge, and the power at the extremities of his voice are fully equal to that of its middle register.” —THE GUARDIAN

Presenting Sponsor
Great Performers Series

BEETHOVEN PROJECT
MUMFORDTHU MAY 2 8PM
FRI MAY 3 8PM**BEETHOVEN PROJECT: MTT EXPLORES EARLY BEETHOVEN**

Michael Tilson Thomas conductor
Sally Matthews soprano
Tamara Mumford mezzo-soprano
Barry Banks tenor
Andrew Foster-Williams bass-baritone
Joseph Brent mandolin
San Francisco Symphony and Chorus

Beethoven Overture to *The Creatures of Prometheus*
Beethoven Sonatina for Mandolin and Fortepiano ❷
Beethoven Cantata on the Death of Emperor Joseph II ❷
Beethoven Symphony No. 2

MTT surveys Beethoven’s early works which foretell the brilliance to come. At the age of 20, Beethoven wrote a plangent funeral cantata for the arts-minded “Musical King.” The playful, upbeat Second Symphony, completed in October 1802, contrasts with the agonized letter Beethoven wrote the same month, lamenting his encroaching deafness.

» “Mumford has a lush, open, attractive sound, with an inviting forward placement.”
—OPERA NEWS



BEETHOVEN PROJECT

TILSON THOMAS

SAT MAY 4 8PM
SUN MAY 5 2PM
THU MAY 9 8PM**BEETHOVEN PROJECT: MTT LEADS BEETHOVEN AND ADAMS**

Michael Tilson Thomas conductor
Michael Fabiano tenor
St. Lawrence String Quartet
San Francisco Symphony

Beethoven Three *Equali* for Four Trombones ❷
Beethoven *An die ferne Geliebte* ❷
John Adams *Absolute Jest* (San Francisco Symphony Co-Commission) ❷
Beethoven Symphony No. 4

MTT explores here the maturing Beethoven, as well as his continuing influence. In *An die ferne Geliebte*, Beethoven gives passionate voice to the painful longing for his “distant beloved.” *Absolute Jest* is based on fragments from Beethoven’s immortal late string quartets. Beethoven’s vivacious and eminently hummable Fourth Symphony bridges his Third and Fifth Symphonies, two of the most famous ever written.



BEETHOVEN PROJECT

COOKE

FRI MAY 10 8PM
DAVIES
AFTER
HOURS

SAT MAY 11 8PM

BEETHOVEN PROJECT: MTT AND MISSA SOLEMNIS

Michael Tilson Thomas conductor
Laura Claycomb soprano
Sasha Cooke mezzo-soprano
Michael Fabiano tenor
Shenyang bass-baritone
San Francisco Symphony and Chorus

Beethoven *Missa solemnis*

Beethoven appeared “as if he had been in mortal combat with the whole host of ... his everlasting enemies” while composing *Missa solemnis*, his mystical choral work, written at the same time as his Ninth Symphony. Atop its manuscript he wrote, “From the heart—may it return to the heart.” Expect thunder and lightening from MTT, the Orchestra, Chorus, and guests.

Please note there is no intermission.

Davies After Hours, a post-concert music event, begins immediately after the May 10 concert in the Second Tier lobby-turned-lounge. Free to ticketholders.

» “[Cooke] has a thrilling, dramatic voice.” —THE PHOENIX

“MTT does not carelessly
rush through Beethoven ...

he opens up the music and
gives us a new insight.”

—PIZZICATO (LUXEMBOURG)

» GAUTIER CAPUÇON
MAY 29-JUNE 2

"Capuçon plays the cello with the control and wisdom of a much older musician." —GRAMOPHONE

CHOOSE THREE OR MORE AND **SAVE!**



STEINBACHER

WED MAY 15 8PM
THU MAY 16 8PM
FRI MAY 17 8PM
SAT MAY 18 8PM

JANOWSKI CONDUCTS BRAHMS AND SCHUMANN

Marek Janowski conductor
Arabella Steinbacher violin
Alban Gerhardt cello
San Francisco Symphony

Schumann *Manfred Overture* ◀
Brahms *Double Concerto* ◀
Schumann *Symphony No. 4* ◀

Two giants of the Romantic era grace the program. Schumann's electrifying Fourth Symphony was a birthday present to his young wife Clara. Brahms made the unusual concerto pairing of violin and cello partly to mend a break in his friendship with a virtuoso violinist. The instruments' pronounced difference in sound resulted in a dramatic, Gypsy-flavored work.

» "The San Francisco Symphony plays awfully well under just about any circumstances. But something special seems to happen when Marek Janowski comes to town." —SAN FRANCISCO CHRONICLE



ROBERTSON

WED MAY 22 8PM
FRI MAY 24 6:30PM
SAT MAY 25 8PM

ROBERTSON LEADS RAVEL AND GERSHWIN

David Robertson conductor
Marc-André Hamelin piano
San Francisco Symphony

Elliott Carter *Variations for Orchestra*
Ravel *Piano Concerto for the Left Hand*
Gershwin *Rhapsody in Blue* ◀
Ravel *La Valse*

Ravel, who heard jazz in Harlem with Gershwin, was dumbfounded by the dazzling *Rhapsody in Blue*. When Gershwin asked to study with him, Ravel said, "It is better to write good Gershwin than bad Ravel." The jazz-influenced Concerto for the Left Hand was written for a pianist grievously injured during the First World War. The dark undertones of *La Valse* suggest a furious farewell to gentility in post-war Europe.

» "Beyond [Hamelin's] electrifying technical skills, the Montreal native is probably one of the most complete musicians of his generation: a virtuoso." —LA PRESSE



CAPUÇON

WED MAY 29 8PM
THU MAY 30 2PM
FRI MAY 31 8PM
SUN JUN 2 2PM

DVOŘÁK'S CELLO CONCERTO WITH GAUTIER CAPUÇON

Juraj Valčuha conductor
Gautier Capuçon cello
San Francisco Symphony

Dvořák *Cello Concerto*
Kodály *Dances of Galánta*
Bartók *Suite from The Wooden Prince*

Music from three Eastern Europeans gives this program a delightfully colorful sound palette. Dvořák's enticing concerto is permeated by a youthful song to a lost love. Gramophone called Monsieur Capuçon's recording of it "magical." Kodály's *Dances of Galánta* is raucous yet vibrant, and Bartók's ballet suite in one act features music with dark and totally dramatic undertones.

The Thursday Matinee concerts are endowed by a gift in memory of Rhoda Goldman.



VALČUHA

SAT JUN 1 8PM

DVOŘÁK'S CELLO CONCERTO AND NEW WORLD SYMPHONY

Juraj Valčuha conductor
Gautier Capuçon cello
San Francisco Symphony

Dvořák Cello Concerto
Dvořák Symphony No. 9, *From the New World*

Thrilling yet moving, powerful yet tender, Dvořák's *New World* Symphony is an enormously popular work. It anchors a program focused on the music of Dvořák, whose works are a delight of folk color and gypsy flavor. Also on the program is his enticing Cello Concerto, with its elegiac song to a lost love. French cellist Gautier Capuçon, praised by the *San Francisco Chronicle* for his "eloquent and tonally resplendent playing," does the honors in the popular and plaintive concerto.



VINOCOUR

THU JUN 6 2PM

FRI JUN 7 8PM

SAT JUN 8 8PM

SUN JUN 9 2PM

BARANTSCHIK AND VINOCOUR PLAY BRITTEN'S DOUBLE CONCERTO

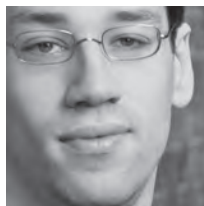
Kirill Karabits conductor
Alexander Barantschik violin
Jonathan Vinocour viola
San Francisco Symphony

Honegger *Pacific 231*
Britten Double Concerto
Sibelius Symphony No. 2

Britten composed the concerto for violin and viola at 18; its youthful vigor will challenge the virtuosity of the SFS's Concertmaster and Principal Violist. Sibelius believed "music begins where the possibilities of language end," and he called his heroic Second Symphony "a confession of the soul."

The Thursday Matinee concerts are endowed by a gift in memory of Rhoda Goldman.

» "The ... exquisite poise and expressive vibrato of Jonathan Vinocour's viola are among the orchestra's greatest assets." —FINANCIAL TIMES



BISS

THU JUN 13 2PM

FRI JUN 14 8PM

SAT JUN 15 8PM

JONATHAN BISS PLAYS SCHUMANN

Roberto Abbado conductor
Jonathan Biss piano
San Francisco Symphony

Schumann *Genoveva* Overture
Schumann Piano Concerto
Ivan Fedele *Scena* (US Premiere)
Schubert Symphony No. 3

Schumann's lilting, effervescent concerto started out as a shorter piece, but he was urged to expand it. Fortunate decision, as it has long ranked among the world's most beloved concertos. Jonathan Biss, a "musician's musician," does the honors. Schubert wrote this jubilant, warm-hearted Third Symphony at age 18.

The Thursday Matinee concerts are endowed by a gift in memory of Rhoda Goldman.

» "[Biss] played as if inspired by the rich unfolding of poetic and exhilarating material." —CLEVELAND PLAIN DEALER



» BARANTSCHIK AND VINOCOUR
PLAY BRITTEN'S DOUBLE CONCERTO
JUNE 6-9

ALEXANDER BARANTSCHIK VIOLIN



JONATHAN VINOCOUR VIOLA



"Barantschik ... [is] an infallibly expressive and impressive musician."

—SAN JOSE MERCURY NEWS



GOLDMAN

MON JUN 17 8PM

JOHN GOLDMAN TRIBUTE CONCERT

Michael Tilson Thomas conductor
 Donato Cabrera conductor
 Ragnar Bohlin conductor
 San Francisco Symphony Youth Orchestra
 San Francisco Symphony and Chorus

Join us in celebrating the extraordinary leadership of outgoing Symphony President John Goldman.

This concert benefits the Orchestra's Pension Fund.



MTT AND STRAVINSKY

SHAHAM

WED JUN 19 8PM

THU JUN 20 2PM

**MTT AND STRAVINSKY:
THE RITE OF SPRING AND GIL SHAHAM**

Michael Tilson Thomas conductor
 Gil Shaham violin
 San Francisco Symphony

Stravinsky *Agon* ◀▶
 Stravinsky Violin Concerto ◀▶
 Stravinsky *The Rite of Spring*

Stravinsky's music has been a passion of Michael Tilson Thomas's since he met the composer while studying at USC. Fitting then that the music of Stravinsky plays a prominent part in the season. Audience favorite Gil Shaham interprets the exuberant, lilting, and vibrantly expressive concerto, while the SFS dives into *The Rite of Spring* with customary zeal.

The Thursday Matinee concerts are endowed by a gift in memory of Rhoda Goldman.



MTT AND STRAVINSKY

TILSON THOMAS

FRI JUN 21 6:30PM

SAT JUN 22 8PM

MTT AND STRAVINSKY: STRAVINSKY'S RUSSIAN ROOTS

Michael Tilson Thomas conductor
 Dmitri Pokrovsky Ensemble
 San Francisco Symphony

Traditional Russian Folk Songs
 Stravinsky *Renard* ◀▶
 Stravinsky *Les Noces* ◀▶
 Stravinsky *The Rite of Spring*

One hundred years ago, Diaghilev, Nijinsky, Stravinsky and Monteux—legends all—triggered the most scandalous evening in ballet history with the premiere of *The Rite of Spring*. The combination of Stravinsky's revolutionary music and Nijinsky's startlingly un-balletic choreography nearly caused a riot. Now universally admired, the music has lost none of its freshness and power.



TILSON THOMAS

THU JUN 27 8PM

FRI JUN 28 8PM

**DAVIES
AFTER
HOURS**

SAT JUN 29 8PM

SUN JUN 30 2PM

TUE JUL 2 8PM

WEST SIDE STORY IN CONCERT

Michael Tilson Thomas conductor
 San Francisco Symphony and Chorus

Bernstein *West Side Story*

In a partnership for the ages, Bernstein and Sondheim took Shakespeare's *Romeo and Juliet* from Verona in the 1500s to New York's Upper West Side in the 1950s. Their unforgettable work, with tunes universally loved, comes alive in a dynamic concert version, the first time an orchestra has performed the complete musical in a concert performance.

Davies After Hours, a post-concert music event, begins immediately after the June 28 concert in the Second Tier lobby-turned-lounge. Free to ticketholders.

» *"Tilson Thomas's balancing act between music's past and future is a major feat: no other conductor today seems so alert to the entire cultural landscape around him."* —THE NEW YORKER

◀▶ LISTEN TO MUSIC EXCERPTS AT **SFSYMPHONY.ORG**

DAVIES SYMPHONY HALL

With a Compose Your Own package, you choose your section for each concert.

This is a great opportunity to hear the Orchestra from different sections of Davies Symphony Hall.

LOGE

Stunning view and sound with a private lounge and waiter service. Loge seats offer first-class comfort and ample leg room.

SIDE BOX

Armchair comfort in your own private box complete with anteroom, coat rack, and waiter service. Perfect for entertaining clients, friends, and colleagues.

PREMIER ORCHESTRA

Fabulous sound in the heart of the main floor.

ORCHESTRA

Excellent acoustics and main floor views as the music unfolds on stage.

SIDE TERRACE

An intimate view of the conductor and orchestra as they bring the music to life.

PREMIER FIRST TIER

Central views and outstanding acoustics one level up.

FRONT ORCHESTRA

A close-up view of extraordinary guest artists, SFS musicians, and the maestro.

FIRST TIER

A favorite for its wonderful views and sound.

UPPER ORCHESTRA

A great value on the main floor.

REAR BOX

Armchair comfort at reduced prices.

PREMIER SECOND TIER

Excellent sound and central views at an exceptional value.

SECOND TIER

Superb acoustics at a great price.

CONCERT PRICES

Some concerts this season are specially priced. Please check the chart below for the correct pricing for your selected concerts.

	2ND TIER	PREMIER 2ND TIER	SIDE TERRACE	UPPER ORCHESTRA	1ST TIER	PREMIER 1ST TIER	REAR BOX	FRONT ORCHESTRA	ORCHESTRA	PREMIER ORCHESTRA	LOGE/SIDE BOX
MOST CONCERTS	\$31	\$40	\$72	\$61	\$63	\$72	\$61	\$68	\$82	\$99	\$140
SPECIALLY PRICED CONCERTS											
András Schiff plays Bach Oct 7, Oct 21, Apr 14, Apr 21	\$29	\$34	\$44	\$44	\$54	\$54	\$44	\$56	\$64	\$77	\$88
Warsaw Philharmonic Orchestra Nov 11-12	\$29	\$34	\$44	\$44	\$54	\$54	\$44	\$56	\$64	\$77	\$88
Renée Fleming and Susan Graham Jan 16	\$32	\$40	\$49	\$49	\$58	\$58	\$49	\$62	\$76	\$93	\$113
Gil Shaham in Recital Feb 8	\$29	\$34	\$44	\$44	\$54	\$54	\$44	\$56	\$64	\$77	\$88
Russian National Orchestra Feb 12-13	\$29	\$34	\$44	\$44	\$54	\$54	\$44	\$56	\$64	\$77	\$88
Itzhak Perlman in Recital Feb 17	\$32	\$40	\$49	\$49	\$58	\$58	\$49	\$62	\$76	\$93	\$113
Matthias Goerne and Christoph Eschenbach April 28	\$29	\$34	\$44	\$44	\$54	\$54	\$44	\$56	\$64	\$77	\$88

Inside Music, an informative talk free to ticketholders, begins one hour prior to most concerts, excluding October 7, 27; November 11-12; January 16; February 8, 12-13, 17; April 14, 21, 28; and June 17.

You will always be assigned the best available seat within your selected section, but your seats will vary by concert. Exact seating locations are not renewable.

Programs, artists, and prices subject to change.



SUBSCRIBE NOW!

SFSYMPHONY.ORG/CYO
(415) 864-6000

FEATURED PHOTOGRAPHY: Bill Swerbenski, Orange Photogrphy, Kristen Loken, and Stefan Cohen
COVER PHOTOS: Michael Tilson Thomas, Music Director; Jonathan Vinocour, Principal Viola

COMPOSE YOUR OWN PACKAGE ORDER FORM

NAME _____ PATRON # (4- TO 7-DIGIT NUMBER ON YOUR MAILING LABEL) _____

ADDRESS _____

CITY _____ STATE _____ ZIP _____

DAY PHONE _____ EVENING PHONE _____ CELL PHONE _____

E-MAIL ADDRESS* _____ FAX _____

* Providing your e-mail address registers you to receive concert reminders, a service informing ticketed patrons of last-minute changes, cancellations, and street closures, and our weekly eNews—a free online newsletter with information about upcoming events, interesting people, and tips on enriching your listening experience.

☐ Check here if wheelchair seating is required.

CHOOSE YOUR CONCERTS AND SEAT LOCATIONS

1 How many seats would you like for each concert? _____

2 CONCERT TITLES	3 DATES	4 SEAT LOCATIONS* (1ST CHOICE)	(2ND CHOICE)	5 PRICE (1ST CHOICE)	6 NO. OF SEATS (FROM STEP 1)	7 MULTIPLY STEP 5 BY STEP 6
Example Concert	0/0/00	1st Tier	2nd Tier	\$ 63	x 2	= \$ 126
1. _____	_____	_____	_____	\$ _____	} x _____	= \$ _____
2. _____	_____	_____	_____	\$ _____		= \$ _____
3. _____	_____	_____	_____	\$ _____		= \$ _____
4. _____	_____	_____	_____	\$ _____		= \$ _____
5. _____	_____	_____	_____	\$ _____		= \$ _____
6. _____	_____	_____	_____	\$ _____		= \$ _____
SUBTOTAL:						\$ _____

If you would like to order more than six concerts, please attach a sheet of paper with your selections along with your order form, call Patron Services at (415) 864-6000, or order online at sfsymphony.org/cyo.

*Due to limited availability, please list your first and second choice for seat location, and use the price of your first choice to determine your package price. We will refund or charge the difference upon seating.

DONATE TODAY!

Help ensure the Symphony's next 100 years by making a gift to the Annual Fund! Ticket sales cover only 38 percent of the Symphony's budget, and your donation can make the difference. Your gift supports our important artistic, education, and community programs, and will be matched by the Second Century Challenge. And as a donor, you will receive invitations to special insider events such as the Friends Private Rehearsal and more.

Annual Fund Contribution: \$ _____

Transaction Fee: \$ 15.00

Pre-paid Parking (\$20 per concert): \$ _____

GRAND TOTAL: \$ _____

SELECT A PAYMENT METHOD

☐ Visa ☐ MasterCard ☐ Discover ☐ Check enclosed payable to SF Symphony

ACCOUNT NUMBER _____ EXP. DATE _____

SIGNATURE _____

MAIL THIS ORDER FORM TO:
Patron Services, San Francisco Symphony
Davies Symphony Hall
201 Van Ness Avenue
San Francisco, CA 94102

BOX OFFICE HOURS
Mon-Fri 10am-6pm, Sat noon-6pm,
Sun 2 hours prior to concerts
WALK UP
Grove St between Van Ness and Franklin