

SF SYMPHONY

2020/21 SEASON



ESA-PEKKA SALONEN

One of the most influential and creative forces in music, our new Music Director Esa-Pekka Salonen has—through his many high-profile conducting roles, work as a leading composer, and championing of exciting musical voices—shaped a unique vision for the present and future of the symphony orchestra. His restless innovation drives him constantly to reposition classical music in the *now*.

San Francisco Symphony audiences know this well. Salonen first stepped onto our podium in 2004 and has returned to lead the San Francisco Symphony on numerous occasions, including during our 2011 centennial celebration and visits in January 2019 and February 2020.

SF^{SYMPHONY}

**SUBSCRIBER
BENEFITS**
2

**SEASON
HIGHLIGHTS**
3

**SEASON
CALENDAR**
12

**CONCERT
SERIES**
29

**SPECIAL
CONCERTS**
42

**PRICING
CHARTS**
48

I'VE ALWAYS KNOWN SAN FRANCISCO TO BE A PLACE of great open-mindedness and creative thinking, and its Symphony exudes that same spirit. This season is all about channeling that spirit and exploring perspectives and voices new to the San Francisco Symphony alongside those of trusted friends.

As I embark on my first season as Music Director of your San Francisco Symphony, I see an Orchestra at the top of its game, renowned for its interpretations of masterpieces and unafraid to treat new works in the same way. From the ancient world of Greek mythology and its millennia of inspiration, to the cultural world of the Weimar Republic and its modern-day parallels, our first season together traces our connections to each other.

This season is also about introducing you to a group of talented and exciting people, our Collaborative Partners, who will be working together to bring fresh ideas and energy into the mix that I simply couldn't have summoned alone. This is a season that celebrates the art form that we love and enriches it with new thoughts, fresh ideas, and ways that we can be a part of our community and the conversations happening all around us.

We all, performers and audiences alike, have this feeling that at the concert hall, we become part of something greater than ourselves. It's personal, it's emotional, and it takes you on a journey.

Please join our San Francisco Symphony and me on this journey, one that is propelled by a wealth of excitement, unknown joys, inspired challenges—and yes, sheer fun.

ESA-PEKKA SALONEN

EMBARK ON A NEW JOURNEY

EXPERIENCE THE 2020–21 SEASON
SUBSCRIBE TODAY!

Innovative ideas, evolving conversations, spectacular music. Join the San Francisco Symphony and Music Director Esa-Pekka Salonen on this exciting journey.

SUBSCRIBER BENEFITS Enjoy these exclusive benefits when you subscribe	CURATED SERIES On Sale Now	COMPOSE YOUR OWN On Sale May 26	
Free ticket offer (<i>See details below</i>)	•		
BEST prices of the season	•		
Subscriber prices will always remain lower than Single Ticket prices	•	•	
Same seats for each concert	•		
Reserved seats for each concert	•	•	
Complimentary seat upgrades	•	•	
Easy ticket exchanges	•	•	
Convenient pre-paid parking	•	•	
Invitation to special subscriber-only events	•	•	
Early access to concerts and events	•	•	
10% discount at the Symphony Store	•	•	

SINGLE
TICKETS
On Sale
July 2020

FREE TICKET OFFER*—GET MORE OF WHAT YOU LOVE!
Subscribe or renew your subscription by **FRIDAY, MARCH 20, 2020**

WHEN YOU SUBSCRIBE OR RENEW TO ...	YOU RECEIVE ...
6 or more concerts	2 FREE Orchestral Series concerts
12 or more concerts	4 FREE Orchestral Series concerts
18 or more concerts	6 FREE Orchestral Series concerts 2 complimentary beverage vouchers 1 additional one-time seat upgrade

*Promotional offer applies to all subscribers who purchase a minimum of 6 subscription concerts. Add-ons and special concerts are not applicable towards minimum purchase. Offer applies to full-price subscriptions and cannot be combined with any other discounts. **The following Orchestral Series concerts are excluded from this offer:** 1/27–28, 1/30, 4/29–5/1, 6/10, 6/12–13. Subject to availability. Promotional offer expires 3/20/2020.



MYTHS & MORTALS

A FESTIVAL OF GREEK MYTHOLOGY

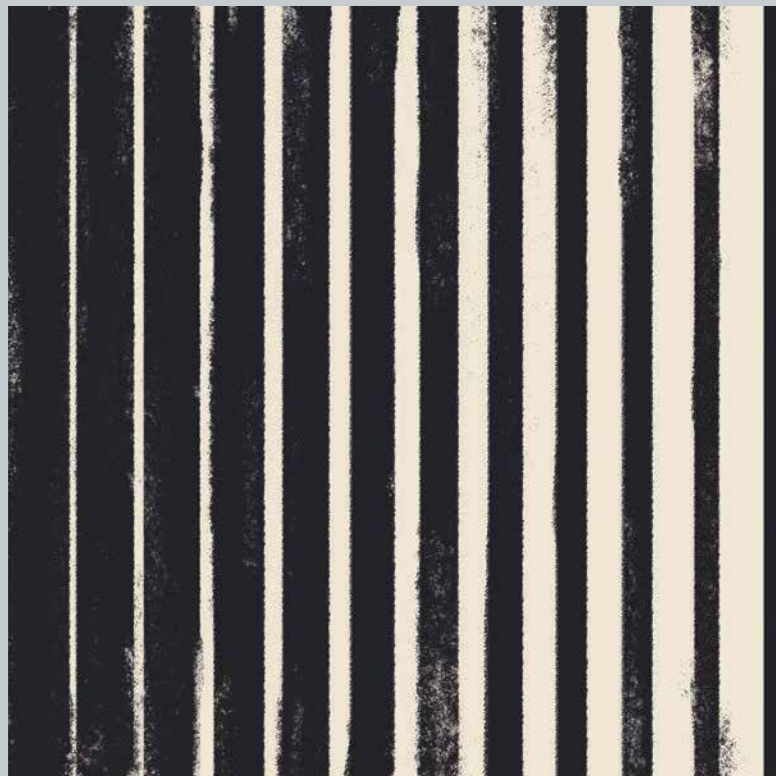
Modern civilization is laden with legends and lore, none with more timeless potency than the ancient libraries of Greek mythology. These extraordinary stories are a source of wisdom, philosophy, and morality; they are humanized by scorching drama, deep tenderness, and poetic beauty.

In March 2021, Esa-Pekka Salonen leads the San Francisco Symphony in **Myths & Mortals**, a wide-ranging, three-week immersion into music inspired by Greek mythology. This is music of the myths that make us, music of the then and now.

- MAR 5–7 SALONEN CONDUCTS SALONEN & RAVEL
- MAR 11–13 SALONEN: SCRIBIN'S PROMETHEUS
- MAR 18–22 SALONEN: R. STRAUSS' ELEKTRA

©ROCHECARDIES CASTOR ET POLLUX, COURTESY SAATCHI ART

VOICES OF CHANGE



Art is a timely and timeless expression of existence. Throughout history and never more than today, composers have served as some of our greatest reporters on the human condition. Their narratives can reveal the world's discords, inequities, and injustices, and bring us back to humanity, giving voice to the human spirit.

OCT 2-3 **SIBELIUS** *Symphony No. 1*

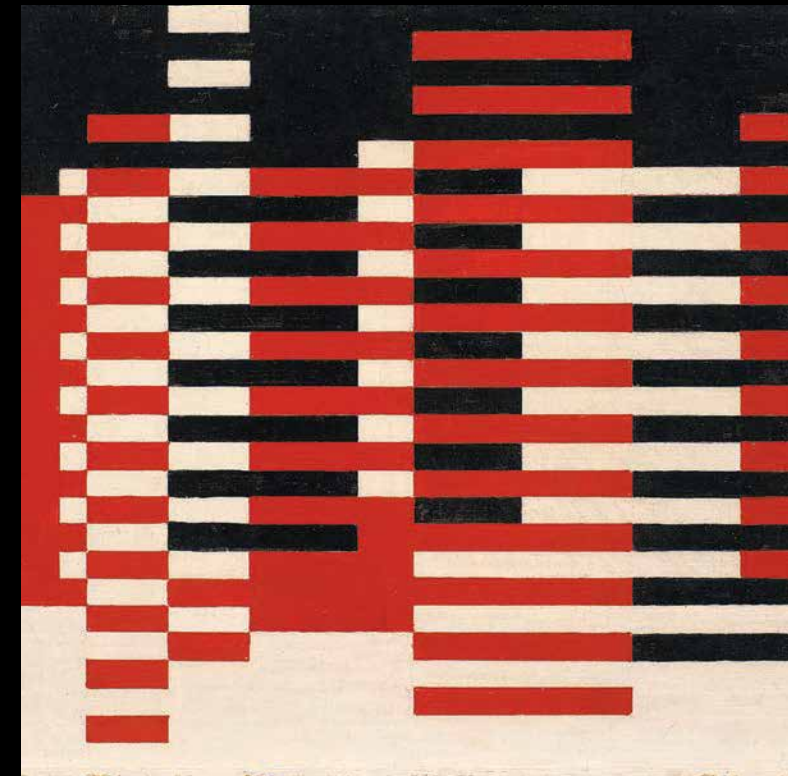
OCT 19 **Great Performers Series**
 WEINBERG *Violin Concerto*
 BARTÓK *Concerto for Orchestra*

NOV 12 & 14 **THE FIGHT FOR EQUALITY:**
 JULIA WOLFE & FLORENCE PRICE

JAN 27-30 **SHOSTAKOVICH** *Symphony No. 15*

FEB 4 & 6 **GIVE ME SHELTER:**
 GABRIEL KAHANE'S EMERGENCY
 SHELTER INTAKE FORM

MAY 13-15 **BRITTEN** *War Requiem*



ON THE PRECIPICE

MUSIC OF THE WEIMAR REPUBLIC

Political crises, economic turns, moral uncertainty. What some describe as present day for much of the world was the reality of the Weimar Republic (1918-33), a bold and beguiling political and social experiment that began with the fall of Imperial Germany at the end of World War I and lasted until the rise of Nazism.

In June 2021, Esa-Pekka Salonen and the San Francisco Symphony present **On the Precipice: Music of the Weimar Republic**, a journey through one of history's most inventive and decadent cultural periods.

With performances exploring the satiric and degenerate, peculiar and cynical, duty and demise, experience why this eclectic festival of music, cabaret, film, and discussions about art at the dawn of fascist Germany so clearly speaks to us *now*.

JUN 17-20 **SALONEN: MAKE ART, NOT WAR**

JUN 24-26 **SALONEN: WEIMAR NIGHTFALL**
 A SEMI-STAGED EVENT

DISCOVER & BE INSPIRED

THE SAN FRANCISCO SYMPHONY'S EXPLORATION OF THE EXPANDING MUSICAL LANDSCAPE IS TAKING US IN EXCITING NEW DIRECTIONS. JOIN US ON THIS JOURNEY OF DISCOVERY.

PREMIERES

Enjoy a slate of World, West Coast, US, and San Francisco Symphony premieres—exciting music played for the first time at Davies Symphony Hall.



JULIA WOLFE



FANG MAN



WYNTON MARSALIS



FLORENCE PRICE

OCT 15–17 **LUCIANO BERIO** *Folk Songs*
 OCT 30–NOV 1 **TIMOTHY HIGGINS** *Concerto for Trombone* (San Francisco Symphony Commission)
 NOV 12 & 14 **FLORENCE PRICE** *Piano Concerto*
JULIA WOLFE *Her Story* (San Francisco Symphony Co-Commission)
 NOV 20–22 **INOCENTE CARREÑO** *Margariteña*
 JAN 14–16 **VALERIE COLEMAN** *Umoja*
JOHN CORIGLIANO *Saxophone Concerto* (San Francisco Symphony Commission)
JAKE HEGGIE *Moby-Dick Suite*
WYNTON MARSALIS *Selections from Blues Symphony*
 FEB 4 & 6 **GABRIEL KAHANE** *emergency shelter intake form*
 FEB 11 & 13 **TEXU KIM** *Bounce!!*
LOU HARRISON *Concerto for Pipa with String Orchestra*
YOUNGHI PAGH-PAAN *NIM*
TAKASHI TOSHIMATSU *The Age of Birds*
ZHOU LONG *Rhyme of Taigu*

MAR 5–7 **ESA-PEKKA SALONEN** *Gemini*
 MAR 11–13 **FANG MAN** *New Work* (San Francisco Symphony & Toulmin Co-Commission)
 MAR 26–28 **JÖRG WIDMANN** *Viola Concerto*
HELEN GRIME *Virga*
 APR 8–10 **SOFIA GUBAIDULINA** *Fairytale Poem (Märchen-Poem)*
 APR 29–MAY 1 **CAROLINE SHAW** *Entr'acte*
BEHZAD RANJBARAN *Violin Concerto*
 MAY 6–8 **FRANCISCO COLL** *Four Iberian Miniatures*
 MAY 20–22 **UNSUKE CHIN** *Frontispiece for Orchestra*
 MAY 27–29 **BETSY JOLAS** *A Little Summer Suite*
 JUN 3–5 **ALBERTO GINASTERA** *Violin Concerto*
 JUN 17–20 **BRYCE DESSNER** *Violin Concerto* (San Francisco Symphony Co-Commission)
 JUN 24–26 **PAUL HINDEMITH** *Mörder, Hoffnung der Frauen (Murderer, the Hope of Women)*
KURT WEILL *Das Berliner Requiem (The Berlin Requiem)*

CONDUCTING DEBUTS

We introduce conductors who bring fresh insights and viewpoints to the podium in their San Francisco Symphony Orchestral Series debuts.



NATHALIE STUTZMANN
JUN 10–13



RAFAEL PAYARE
NOV 20–22



HAN-NA CHANG
APR 8–10



GIANCARLO GUERRERO
NOV 12 & 14



PERRY SO
FEB 11 & 13



ELIM CHAN
JUN 3–5



JONATHAN COHEN
DEC 11 & 12



LUDOVIC MORLOT
MAY 27–29



MICHAEL SANDERLING
MAY 20–22

COLLABORATIVE PARTNERS

Esa-Pekka Salonen and the San Francisco Symphony introduce a new artistic leadership model unique to the orchestral world, one anchored by an extraordinary group of eight visionary artists, thinkers, and doers from a variety of cultural disciplines. They join with Salonen and the Orchestra in sparking new conversations, breaking the rules, and creating powerful experiences in and beyond the concert hall.

NICHOLAS BRITELL
composer and pianist

JULIA BULLOCK
classical vocalist/curator
with social consciousness at
the forefront of her work

CLAIRE CHASE
flutist, educator, and creator
of new and experimental music

BRYCE DESSNER
composer and guitarist

PEKKA KUUSISTO
violinist, musical director,
and artistic trailblazer

NICO MUHLY
composer and multi-faceted
collaborator

CAROL REILEY
artificial intelligence entrepreneur
and roboticist

ESPERANZA SPALDING
jazz bassist, vocalist, and
undefinable artist



CLAIRE CHASE



NICHOLAS BRITELL



PEKKA KUUSISTO



ESPERANZA SPALDING



JULIA BULLOCK



NICO MUHLY



CAROL REILEY



BRYCE DESSNER

SEASON HIGHLIGHTS

Join the Collaborative Partners and the San Francisco Symphony in stepping off the beaten path. Be a part of this open and resonant conversation by thinking outside the box and inside the music.

COLLABORATIVE PARTNERS FESTIVAL
Davies Symphony Hall
and venues around the
Bay Area. *Details to be
announced July 2020.*
SEP 9-27

OPENING NIGHT GALA
Collaborative Partners
SEP 30

**SALONEN: J.S. BACH
& SIBELIUS 1**
Collaborative Partners
OCT 2 & 3

SOUNDBOX*
Collaborative Partners
DEC 4 & 5

SOUNDBOX*
Collaborative Partners
JAN 15 & 16

SOUNDBOX*
Collaborative Partners
FEB 12 & 13

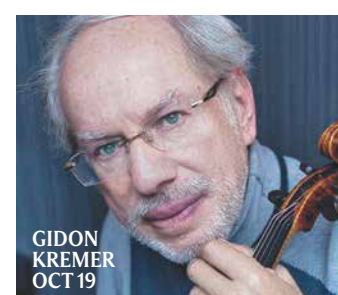
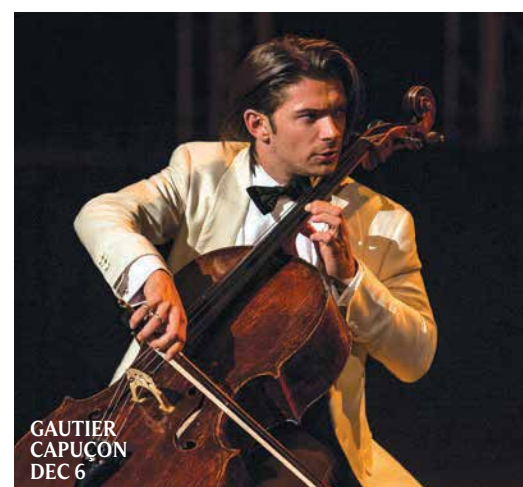
SOUNDBOX*
Collaborative Partners
MAY 28 & 29

**SALONEN: SCRIBIN'S
PROMETHEUS**
Carol Reiley
MAR 11-13

**SALONEN:
MAKE ART, NOT WAR**
Bryce Dessner
Pekka Kuusisto
JUN 17-20

*SoundBox tickets available
one month prior to event

More events and programs
to be announced.
Visit sfsymphony.org/cp



MUSIC'S BIGGEST STARS

FRIENDS FROM AROUND THE GLOBE TAKE TO THE DAVIES
SYMPHONY HALL STAGE TO SHARE THE JOY AND VIRTUOSITY
OF LIVE PERFORMANCE AT ITS VERY BEST.

MICHAEL TILSON THOMAS

Music Director Laureate Michael Tilson Thomas
returns to the San Francisco Symphony in four
programs featuring artists and composers essential
to his remarkable 25-year musical legacy with
the Orchestra.

- OCT 30–NOV 1 **MTT: MAHLER 1**
- NOV 5–8 **MTT: BEETHOVEN'S
MISSA SOLEMNIS**
- JAN 21–23 **MTT: EMANUEL AX
PLAYS MOZART**
- JAN 27–30 **MTT: YUJA PLAYS
RACH PIANO CONCERTO 2**



EXCLUSIVE FREE TICKET OFFER!

Subscribe
by March 20
and receive
FREE Orchestral
Series concerts.

SEE PAGE 2.



DANIEL HAWKINS, ACTING
ASSOCIATE PRINCIPAL HORN
SAN FRANCISCO SYMPHONY



CHRISTINA KING, VIOLA
SAN FRANCISCO SYMPHONY



CHEN ZHAO, VIOLIN
SAN FRANCISCO SYMPHONY

2020/21

SEASON CALENDAR



SALONEN: J.S. BACH & SIBELIUS 1

FRIDAY-C
OCT 2 8PM
SATURDAY-A
OCT 3 8PM

Esa-Pekka Salonen, the San Francisco Symphony, and our Collaborative Partners reimagine the music of J.S. Bach, who is, in Salonen's words, "the foundation of everything." Then, Salonen conducts the Orchestra in the music of his fellow Finn, Sibelius. The First, a lusciously dark symphony written during the political turmoil of Russian rule in Finland, became a patriotic rallying cry against the czar, and stood as a powerful declaration that Finnish culture was worth fighting for.

ESA-PEKKA SALONEN, conductor
COLLABORATIVE PARTNERS

San Francisco Symphony Collaborative
Partners reimagine the music of **J.S. BACH**
SIBELIUS Symphony No. 1

THESE CONCERTS, A PART OF THE BARBRO
AND BERNARD OSHER MASTERWORKS SERIES,
ARE MADE POSSIBLE BY A GENEROUS GIFT FROM
BARBRO AND BERNARD OSHER.

SALONEN: DUKE BLUEBEARD'S CASTLE

THURSDAY-A
OCT 8 8PM
FRIDAY-E
OCT 9 8PM
SATURDAY*
OCT 10 8PM
SUNDAY-A
OCT 11 2PM

*This concert
date is not part
of a series.
Add-on this
date to your
subscription
package!

Can love overcome a heavy soul? Bartók's one-act opera, *Duke Bluebeard's Castle*, follows the struggle of young Judith and her aging husband Bluebeard after he opens the doors to his windowless castle. Esa-Pekka Salonen, acclaimed opera stars Michelle DeYoung and Gerald Finley, and the San Francisco Symphony present a spectacular orchestral performance of the heart-pounding rhythms of Bartók's transfixing score. This highly charged program opens with the extraordinary Yefim Bronfman performing another Bartók favorite: the exhilarating Piano Concerto No. 2.

ESA-PEKKA SALONEN, conductor
YEFIM BRONFMAN, piano
MICHELLE DEYOUNG, mezzo-soprano
(Judith)
GERALD FINLEY, bass-baritone (Bluebeard)

BARTÓK Piano Concerto No. 2
BARTÓK *Duke Bluebeard's Castle*

SALONEN: RESPIGHI'S PINES OF ROME

THURSDAY-M
OCT 15 2PM
FRIDAY-F
OCT 16 8PM
SATURDAY-B
OCT 17 8PM

Led by Esa-Pekka Salonen with the San Francisco Symphony, Debussy's evocative *Ibéria* teems with the passion and rhythms of Spain, a place that fascinated the composer. Also on the program, Ravel paints luscious and sultry scenes in his *Shéhérazade*, featuring mezzo-soprano Marianne Crebassa. Respighi's imaginative *Pines of Rome* pays homage to the Eternal City—Rome—with scenes of children playing in pine groves, trees casting shadows on catacombs, and echoes of past Roman glory reverberating down the ancient Appian Way.

ESA-PEKKA SALONEN, conductor
MARIANNE CREBASSA, mezzo-soprano

DEBUSSY *Ibéria* from
Images pour orchestre
BERIO Folk Songs
(San Francisco Symphony Premiere)
RAVEL *Shéhérazade*
RESPIGHI *Pines of Rome*

THURSDAY MATINEE CONCERTS ARE ENDOWED
BY A GIFT IN MEMORY OF RHODA GOLDMAN.

RUDOLF
BUCHBINDER

BEETHOVEN250

BUCHBINDER PERFORMS THE COMPLETE BEETHOVEN PIANO CONCERTOS

Soloist and conductor Rudolf Buchbinder joins the San Francisco Symphony to perform all five Beethoven piano concertos in one weekend.

BEETHOVEN PIANO CONCERTOS NOS. 1 & 5

FRIDAY-D
OCT 23 8PM
SUNDAY-B
OCT 25 2PM

With nods towards Mozart and Haydn, Beethoven's first concerto is the infectiously upbeat work of a composer who does not know what is yet to come. Then, Beethoven's fifth and final piano concerto, which rises from the ravages of the Napoleonic wars and from the devastation of his hearing loss. Despite this—or perhaps because of it—this music is a testament to resilience: uplifting, heroic.

RUDOLF BUCHBINDER,
conductor and piano

BEETHOVEN Piano Concerto No. 1
BEETHOVEN Piano Concerto No. 5,
Emperor

BEETHOVEN PIANO CONCERTOS NOS. 2, 3, & 4

SATURDAY-C
OCT 24 8PM

Rudolf Buchbinder and the San Francisco Symphony perform a program of three storied Beethoven piano concertos. This unique all-piano concerto program opens with the boisterous and light Second. Then the Fourth, equal parts poetic and radical, with a slow movement that calls to mind the mythical Orpheus taming the wild beasts with his music. The program concludes with Beethoven's dramatic and jubilant Third Concerto, famed for its stratospheric high C, which required piano makers to extend the range of the instrument forever.

RUDOLF BUCHBINDER,
conductor and piano

BEETHOVEN Piano Concerto No. 2
BEETHOVEN Piano Concerto No. 4
BEETHOVEN Piano Concerto No. 3

Add the other program to your subscription package for the complete Beethoven Piano Concerto experience!

MICHAEL TILSON THOMAS
MUSIC DIRECTOR LAUREATE

MTT: MAHLER 1

FRIDAY-C
OCT 30 8PM
SATURDAY-D
OCT 31 8PM
SUNDAY-A
NOV 1 2PM

The critically acclaimed, multi-Grammy-winning combo of MTT and the San Francisco Symphony reunite to perform one of their signature works: Mahler's First. With music that begins with a shimmer in the strings and ends in one of the most heroic finales ever written, this is a breathtaking experience. Opening the program is the world premiere of a trombone concerto composed and performed by San Francisco Symphony Principal Trombone Timothy Higgins.

MICHAEL TILSON THOMAS,
Music Director Laureate and conductor
TIMOTHY HIGGINS, trombone

TIMOTHY HIGGINS Concerto for Trombone
(World Premiere, San Francisco Symphony Commission)
MAHLER Symphony No. 1

BEETHOVEN250

MTT: BEETHOVEN'S MISSA SOLEMNIS

THURSDAY-B
NOV 5 8PM
FRIDAY-F
NOV 6 8PM
SUNDAY-B
NOV 8 2PM

"From the heart—may it return again to the heart." So Beethoven inscribed the score of his *Missa solemnis*, an awe-inspiring, optimistic musical monument that celebrates art and its ability to bring humanity closer to the divine. Music Director Laureate Michael Tilson Thomas leads the San Francisco Symphony, Chorus, superstar vocalists, and a guest children's chorus in Beethoven's moving masterpiece.

MICHAEL TILSON THOMAS,
Music Director Laureate and conductor
SAN FRANCISCO SYMPHONY CHORUS
RAGNAR BOHLIN, director

BEETHOVEN *Missa solemnis*

THESE CONCERTS, A PART OF THE BARBRO AND BERNARD OSHER MASTERWORKS SERIES, ARE MADE POSSIBLE BY A GENEROUS GIFT FROM BARBRO AND BERNARD OSHER.

JULIA
WOLFE

THE FIGHT FOR EQUALITY: JULIA WOLFE & FLORENCE PRICE

THURSDAY-C
NOV 12 8PM
SATURDAY-A
NOV 14 8PM

The San Francisco Symphony is joined by the all-female Lorelei Ensemble for the San Francisco Symphony premiere of folk/rock/classical mixologist Julia Wolfe's profound new work *Her Story*, a San Francisco Symphony commission inspired by progress: the 100-year anniversary of the ratification of women's suffrage in the United States. Nicaraguan-born conductor Giancarlo Guerrero and soloist Aaron Diehl make their San Francisco Symphony debuts in a program that opens with a virtuosic, one-movement piano concerto by pioneering American composer Florence Price, who in the 1930s became the first African-American woman to be recognized as a symphonic composer. With remarkable lyrical sweep and folk and spiritual accents, Price's inventive concerto is testament to a composer who infused her music with a range of influences to find a voice that was all her own.

GIANCARLO GUERRERO, conductor
AARON DIEHL, piano
LORELEI ENSEMBLE, vocal ensemble

PRICE Piano Concerto
(San Francisco Symphony Premiere)
JULIA WOLFE *Her Story*
(San Francisco Symphony Premiere & Co-Commission)

GIANCARLO GUERRERO'S APPEARANCE IS SUPPORTED BY THE LOUISE M. DAVIES GUEST CONDUCTOR FUND.



TCHAIKOVSKY'S PATHÉTIQUE

FRIDAY-E
NOV 20 8PM
SATURDAY-B
NOV 21 8PM
SUNDAY-A
NOV 22 2PM

Venezuelan conductor Rafael Payare makes his San Francisco Symphony debut in a program featuring cellist and MacArthur “genius grant” recipient Alisa Weilerstein in one of Shostakovich’s most compelling works, the explosive Cello Concerto No. 1. Dedicated to the composer’s close friend—the late, great cello icon Mstislav Rostropovich—the concerto opens with four unforgettable, decisive notes that propel the entire piece forward. The program closes with Tchaikovsky’s Sixth Symphony, nicknamed *Pathétique* to describe the turmoil and passion evoked by such lush orchestral writing.

RAFAEL PAYARE, conductor
ALISA WEILERSTEIN, cello

CARREÑO *Margariteña*
(San Francisco Symphony Premiere)
SHOSTAKOVICH Cello Concerto No. 1
TCHAIKOVSKY Symphony No. 6,
Pathétique

RAFAEL PAYARE’S APPEARANCE IS GENEROUSLY SUPPORTED BY THE SHENSON YOUNG ARTIST FUND AND BY THE LOUISE M. DAVIES GUEST CONDUCTOR FUND.

HANDEL’S MESSIAH

FRIDAY-D
DEC 11 8PM
SATURDAY-C
DEC 12 8PM

Experience the glorious majesty of Handel’s *Messiah*. Featuring the famous “Hallelujah” Chorus, the magnificent power of 100 voices in harmony demonstrates why this celebrated masterpiece is a holiday favorite—and one of the most loved works of all time.

JONATHAN COHEN, conductor
SAN FRANCISCO SYMPHONY CHORUS
RAGNAR BOHLIN, director

HANDEL *Messiah*



A NEW AMERICAN SOUND

THURSDAY-C
JAN 14 8PM
FRIDAY-C
JAN 15 8PM
SATURDAY-D
JAN 16 8PM

Hear some of the most vital music of the contemporary American soundscape in a program led by audience- and musician-favorite Cristian Măcelaru. Opening the evening is Valerie Coleman’s joyous *Umoja* (“unity” in Swahili). Then, the exemplary Tim McAllister, one of the greatest classical saxophonists of his generation, who makes his San Francisco Symphony debut in the world premiere of Pulitzer Prize-winning composer John Corigliano’s saxophone concerto. Măcelaru’s orchestral arrangement of music from influential composer Jake Heggie’s hit opera *Moby-Dick* is filled with dramatic musical vignettes. This extraordinary program concludes with a prismatic work by Wynton Marsalis. His cool-toned *Blues Symphony*—a versatile blend of jazz, ragtime, blues, and spirituals written for purely orchestral forces—celebrates the evolution of the blues in the Americas through the lens of African-American history and folklore.

CRISTIAN MĂCELARU, conductor
TIM McALLISTER, saxophone

VALERIE COLEMAN *Umoja*
(San Francisco Symphony Premiere)
JOHN CORIGLIANO Saxophone Concerto
(World Premiere, San Francisco Symphony Commission)
JAKE HEGGIE (ARR. MĂCELARU)
Moby-Dick Suite
(San Francisco Symphony Premiere)
WYNTON MARSALIS Selections
from *Blues Symphony*
(San Francisco Symphony Premiere)

CRISTIAN MĂCELARU’S APPEARANCE IS SUPPORTED BY THE LOUISE M. DAVIES GUEST CONDUCTOR FUND.

JOHN CORIGLIANO’S SAXOPHONE CONCERTO IS MADE POSSIBLE THROUGH THE GENEROUS SUPPORT OF MICHÈLE AND LARRY CORASH, AS A 50TH WEDDING ANNIVERSARY PRESENT TO ONE ANOTHER.



MTT: EMANUEL AX PLAYS MOZART

THURSDAY-M
JAN 21 2 PM
FRIDAY-D
JAN 22 8 PM
SATURDAY-B
JAN 23 8 PM

The legendary Emanuel Ax joins Music Director Laureate Michael Tilson Thomas and the San Francisco Symphony in Mozart’s Piano Concerto No. 17—an impeccable work that combines joy and pathos with Mozart’s characteristic grace. The program concludes with Bruckner’s deeply reverential Ninth Symphony, a labor of love he toiled over for nine years yet never completed. With a nod to Beethoven’s Ninth, Bruckner offers up his masterwork in the same dark and stormy key, D minor.

MICHAEL TILSON THOMAS,
Music Director Laureate and conductor
EMANUEL AX, piano

MOZART Piano Concerto No. 17
BRUCKNER Symphony No. 9, *Unfinished*

THURSDAY MATINEE CONCERTS ARE ENDOWED BY A GIFT IN MEMORY OF RHODA GOLDMAN.



MTT: YUJA PLAYS RACH PIANO CONCERTO 2

OPEN
REHEARSAL*
WEDNESDAY
JAN 27 10AM
WEDNESDAY**
JAN 27 8PM
THURSDAY-A
JAN 28 8PM
FRIDAY**
JAN 29 8PM
SATURDAY-C
JAN 30 8PM

*Please note this Open Rehearsal takes place on a Wednesday.

**This concert date is not part of a series. Add-on this date to your subscription package!

Music Director Laureate Michael Tilson Thomas, superstar Yuja Wang, and the San Francisco Symphony team up to perform Rachmaninoff’s brilliant Piano Concerto No. 2—a work he had so much trouble starting that he sought help from a hypnotist. Rachmaninoff ended up writing one of the most popular piano concertos in the repertoire, which abounds with triumphant themes and lush orchestration. Then, the Orchestra performs Shostakovich’s final symphony, a profound work that references societal upheavals in Russia. With a solemn brass chorale at the start of the Adagio alluding to “Bloody Sunday” in January 1905, we hear Shostakovich writing about tyranny and turmoil, and despairing for the thousands of unarmed civilians killed by police during a peaceful petition before Tsar Nicholas II.

MICHAEL TILSON THOMAS,
Music Director Laureate and conductor
YUJA WANG, piano

RACHMANINOFF Piano Concerto No. 2
SHOSTAKOVICH Symphony No. 15

OPEN REHEARSALS ARE ENDOWED BY A BEQUEST FROM THE ESTATE OF KATHARINE HANRAHAN.



GABRIEL KAHANE

GIVE ME SHELTER: GABRIEL KAHANE'S EMERGENCY SHELTER INTAKE FORM

OPEN
REHEARSAL
FEB 4 10AM
THURSDAY-B
FEB 4 8PM
SATURDAY-A
FEB 6 8PM

What brings you here? What happened? Where did you sleep last night? In terms harrowing and sardonic, *emergency shelter intake form* asks us to set aside our preconceptions surrounding the crisis of homelessness, and to open ourselves to the possibility that, in a world driven by inequity, we are all closer to economic precarity than we might like to believe. Anchored by four soloists beloved in new music and avant-pop spaces, *ESIF* also features a local community chorus whose members' lived experiences bear witness to the subject matter. We are left to ask ourselves: How do we care for the most vulnerable among us?

EDWIN OUTWATER, conductor
CONRAD TAO, piano
ALICIA HALL MORAN, mezzo-soprano
CHORUS OF INCONVENIENT STATISTICS,
Holland Andrews; Gabriel Kahane;
Holcombe Waller
COMMUNITY CHORUS

GERSHWIN Piano Concerto in F
GABRIEL KAHANE *emergency shelter intake form*
(San Francisco Symphony Premiere)

OPEN REHEARSALS ARE ENDOWED BY A BEQUEST FROM THE ESTATE OF KATHARINE HANRAHAN.

EDWIN OUTWATER'S APPEARANCE IS SUPPORTED BY THE LOUISE M. DAVIES GUEST CONDUCTOR FUND.



WU MAN

LUNAR NEW YEAR: CELEBRATING ASIA

OPEN
REHEARSAL
FEB 11 10AM
THURSDAY-A
FEB 11 8PM
SATURDAY-D
FEB 13 8PM

In celebration of the Lunar New Year, the San Francisco Symphony draws inspiration from the music of Asia to welcome the coming season of renewal and regrowth. Pipa virtuoso Wu Man joins the Orchestra for Harrison's songful concerto, a work he composed for her in 1997. The piece sets the *pipa*, or Chinese lute, against a backdrop of Western string instruments, highlighting their differences and affinities. Led by rising star conductor Perry So in his Orchestral Series debut, this rich and varied program features the San Francisco Symphony premieres of Texu Kim's riotous *Bounce!!*, Younghi Pagh-Paan's undulating *NIM*, Takashi Yoshimatsu's delicate *The Age of Birds*, and Zhou Long's powerful *The Rhyme of Taigu*.

PERRY SO, conductor
WU MAN, pipa

TEXU KIM *Bounce!!*
(San Francisco Symphony Premiere)
HARRISON Concerto for Pipa
with String Orchestra
(San Francisco Symphony Premiere)
YOUNGHI PAGH-PAAN *NIM*
(San Francisco Symphony Premiere)
TAKASHI YOSHIMATSU *The Age of Birds*
(San Francisco Symphony Premiere)
ZHOU LONG *The Rhyme of Taigu*
(San Francisco Symphony Premiere)

OPEN REHEARSALS ARE ENDOWED BY A BEQUEST FROM THE ESTATE OF KATHARINE HANRAHAN.

PERRY SO'S APPEARANCE IS SUPPORTED BY THE LOUISE M. DAVIES GUEST CONDUCTOR FUND.



HÉLÈNE GRIMAUD

BLOMSTEDT: SIBELIUS 4 & HÉLÈNE GRIMAUD

THURSDAY-B
FEB 18 8PM
FRIDAY-F
FEB 19 8PM
SUNDAY-B
FEB 21 2PM

Tragedy and strife are the inspiration for this program led by Conductor Laureate Herbert Blomstedt. First is Brahms' *Tragic Overture*, which draws from the stories of Sophocles and Shakespeare. Sibelius' Symphony No. 4 offers a deeply personal take on adversity, detailing the composer's bouts of depression. The elegant and impassioned Hélène Grimaud joins the Orchestra in Schumann's only piano concerto, a haunting and beautiful piece brimming with joy and melody that was nearly 18 years in the making.

HERBERT BLOMSTEDT,
Conductor Laureate and conductor
HÉLÈNE GRIMAUD, piano

BRAHMS *Tragic Overture*
SIBELIUS Symphony No. 4
SCHUMANN Piano Concerto



HERBERT BLOMSTEDT

BLOMSTEDT: MOZART & SCHUBERT

THURSDAY-M
FEB 25 2PM
SATURDAY-A
FEB 27 8PM
SUNDAY-A
FEB 28 2PM

Conductor Laureate Herbert Blomstedt and the San Francisco Symphony play Mozart's understated and brilliant Symphony No. 39, a work rife with melodies, dissonance, and colors, which pushed symphonic writing further than it had ever gone before. Then, the grandeur of Schubert takes center stage with the Symphony in C major, aptly nicknamed *The Great*. Within its extended contrasts of wistfulness and gloriousness, we hear the deep influence of Beethoven (and the precedent for Mahler and Bruckner).

HERBERT BLOMSTEDT,
Conductor Laureate and conductor

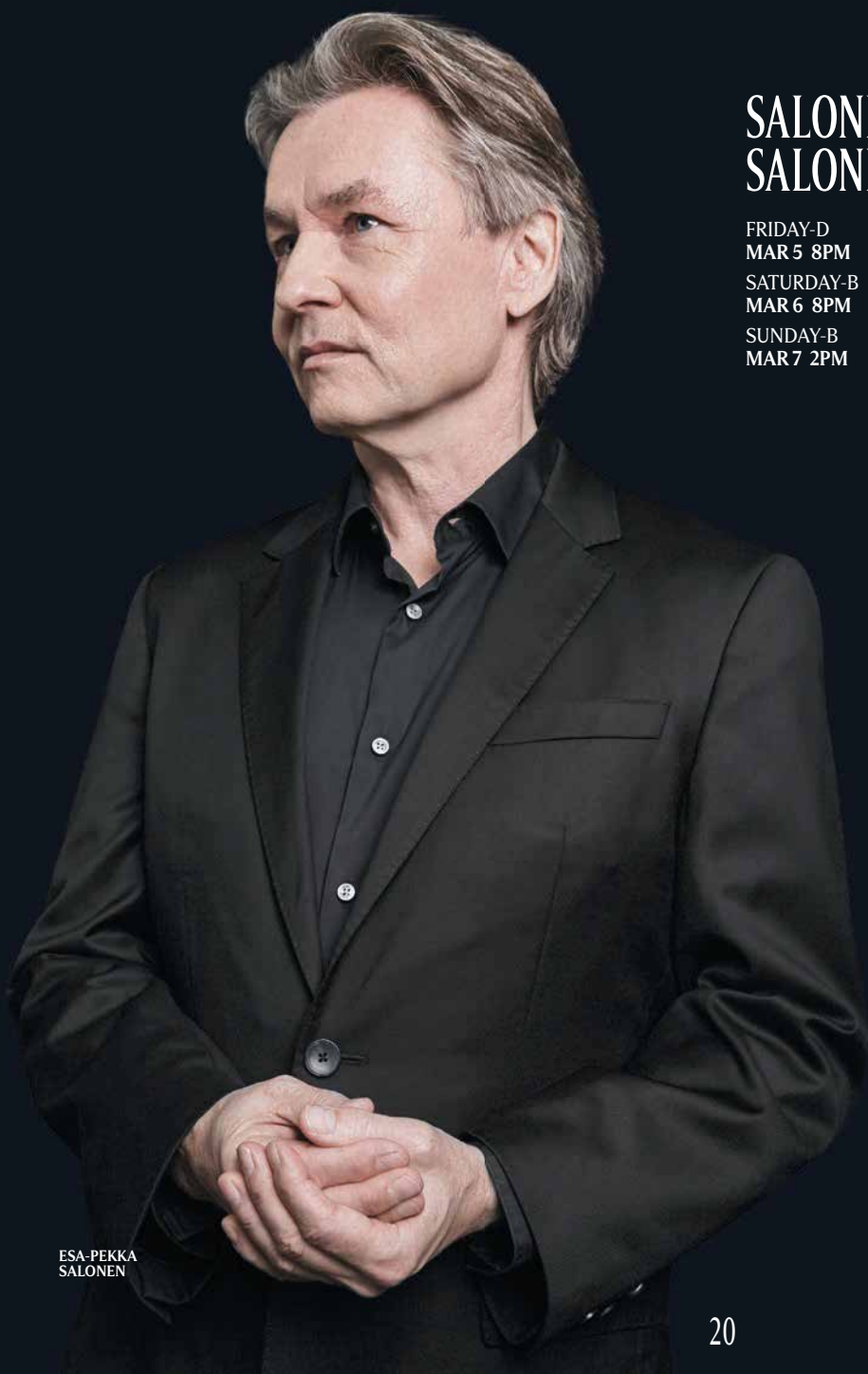
MOZART Symphony No. 39
SCHUBERT Symphony in C major,
The Great

THURSDAY MATINEE CONCERTS ARE ENDOWED BY A GIFT IN MEMORY OF RHODA GOLDMAN.



MYTHS & MORTALS

ESA-PEKKA SALONEN LEADS THE SAN FRANCISCO SYMPHONY
IN A THREE-WEEK FESTIVAL DEDICATED TO THE FANTASTICAL WORLD
OF GREEK GODS, DEMI-GODS, AND MORTALS.



ESA-PEKKA
SALONEN

SALONEN CONDUCTS SALONEN & RAVEL

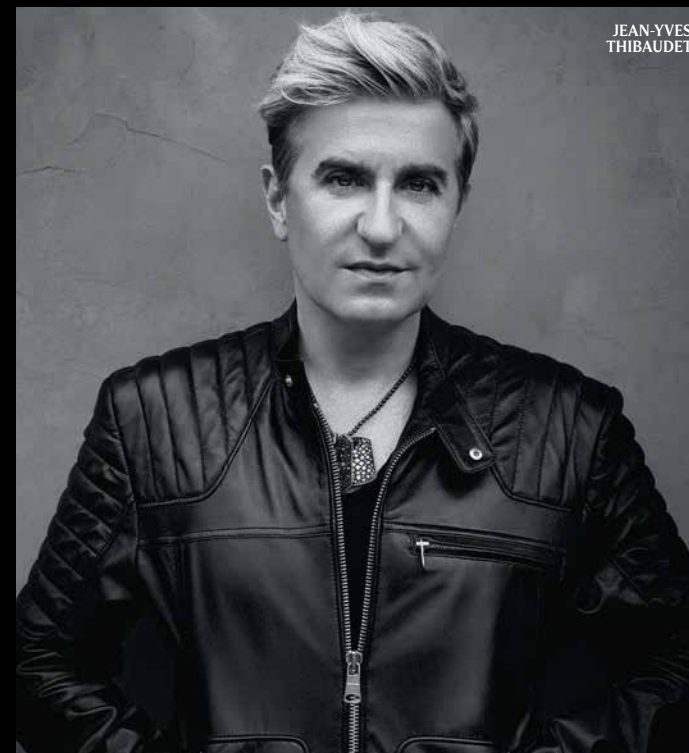
FRIDAY-D
MAR 5 8PM
SATURDAY-B
MAR 6 8PM
SUNDAY-B
MAR 7 2PM

In the festival's first program, hear the San Francisco Symphony premiere of Salonen's *Gemini*, depicting twin half-brothers Castor and Pollux—one mortal, one demi-god—and their epic struggle to fulfill their opposing destinies. The concert culminates in a work dedicated to another Greek myth, that of Daphnis and Chloe. Arguably Ravel's most awe-inspiring work, this love story for the ages is full of lush orchestration, splashes of colors, and emotional intensity.

ESA-PEKKA SALONEN, conductor
SAN FRANCISCO SYMPHONY CHORUS
RAGNAR BOHLIN, director

RAMEAU *Castor and Pollux* Suite
ESA-PEKKA SALONEN *Gemini*
(San Francisco Symphony Premiere)
RAVEL *Daphnis et Chloé*

THESE CONCERTS, A PART OF THE BARBRO
AND BERNARD OSHER MASTERWORKS SERIES,
ARE MADE POSSIBLE BY A GENEROUS GIFT FROM
BARBRO AND BERNARD OSHER.



JEAN-YVES
THIBAUDET

SALONEN: SCRIABIN'S PROMETHEUS

THURSDAY-C
MAR 11 8PM
FRIDAY-C
MAR 12 8PM
SATURDAY-C
MAR 13 8PM

The San Francisco Symphony's second Myths & Mortals program features Scriabin's spectacular *Prometheus: The Poem of Fire*, performed by the beloved, enigmatic pianist Jean-Yves Thibaudet. Calling for a *clavier à lumières*, a keyboard that links colored lights with sounds, Scriabin's transformative piece brings the senses together, heightened in their orbit of each other, while telling a mythic tale of man, cosmos, and fire. The program also includes ballet music by Beethoven and Stravinsky, both inspired by stories from ancient mythology, and the world premiere of a San Francisco Symphony and Toulmin co-commission by Fang Man, a work blending Chinese and Greek myths.

ESA-PEKKA SALONEN, conductor
JEAN-YVES THIBAUDET, piano

BEETHOVEN Selections from
The Creatures of Prometheus
FANG MAN New Work
(World Premiere & San Francisco
Symphony & Toulmin Co-Commission)
SCRIABIN *Prometheus, The Poem of Fire*



CHRISTINE
GOERKE

SALONEN: R. STRAUSS' ELEKTRA

THURSDAY-A
MAR 18 8PM
SATURDAY-D
MAR 20 8PM
MONDAY-B*
MAR 22 7:30PM

*The Monday
performance
is part of the
Sunday-B
Concert Series

Cacophonous, melodramatic, and relentless, R. Strauss' *Elektra* is an inspired take on a classic ancient Greek revenge parable. Our three-week Myths & Mortals festival concludes with this 20th-century operatic masterpiece, which pits the most extreme family dysfunction against a daughter's intense love, rage, and longing. With a score that demands ingenuity and virtuosity from every instrument, experience this classic opera performed by Salonen, the San Francisco Symphony, Chorus, and a dynamic cast of vocalists.

ESA-PEKKA SALONEN, conductor
CHRISTINE GOERKE, soprano (*Elektra*)
EMILY MAGEE, soprano (*Chrysothemis*)
ANNA LARSSON, contralto (*Klytemnestra*)
ALAN OKE, tenor (*Aegisth*)
PEIXIN CHEN, bass-baritone (*Orest*)
SAN FRANCISCO SYMPHONY CHORUS
RAGNAR BOHLIN, director

R. STRAUSS *Elektra*

THESE CONCERTS, A PART OF THE BARBRO
AND BERNARD OSHER MASTERWORKS SERIES,
ARE MADE POSSIBLE BY A GENEROUS GIFT FROM
BARBRO AND BERNARD OSHER.



DANIEL HARDING CONDUCTS EIN HELDENLEBEN

FRIDAY-E
MAR 26 8PM
SATURDAY-A
MAR 27 8PM
SUNDAY-A
MAR 28 2PM

Renowned conductor Daniel Harding, Music and Artistic Director of the Swedish Radio Symphony Orchestra, leads the San Francisco Symphony in R. Strauss' sweeping portrait of a hero's life, *Ein Heldenleben*. This irresistible orchestral showpiece—swaggering, sweet, impassioned, and sumptuously scored—traces the hero facing foes as well as his most elusive adversary: a mischievous love interest. The program also features two contemporary works: Helen Grime's glistening and evanescent *Virga*, and the US premiere of Jörg Widmann's playful and virtuosic Viola Concerto, with the astonishing Antoine Tamestit in his San Francisco Symphony debut.

DANIEL HARDING, conductor
ANTOINE TAMESTIT, viola

HELEN GRIME *Virga*
(San Francisco Symphony Premiere)

JÖRG WIDMANN Viola Concerto
(US Premiere)

R. STRAUSS *Ein Heldenleben*

DANIEL HARDING'S APPEARANCE IS SUPPORTED BY
THE LOUISE M. DAVIES GUEST CONDUCTOR FUND.



BERLIOZ'S SYMPHONIE FANTASTIQUE

THURSDAY-M
APR 8 2PM
FRIDAY-F
APR 9 8PM
SATURDAY-B
APR 10 8PM

When it comes to painting vivid scenes with music, Berlioz is one of the great masters. Experience his *Symphonie fantastique*, a sensational depiction of a young artist's unrequited love and the psychological torment that follows. Led by Korean-born conductor Han-na Chang in her San Francisco Symphony conducting debut, this dramatic program opens with Tatar-Russian composer Sofia Gubaidulina's *Fairytale Poem* and features virtuoso Víkingur Ólafsson in his San Francisco Symphony debut, performing Grieg's Piano Concerto, a revered work filled with breathtaking, tingling tension.

HAN-NA CHANG, conductor
VÍKINGUR ÓLAFSSON, piano

SOFIA GUBAIDULINA *Fairytale Poem*
(*Märchen-Poem*)

(San Francisco Symphony Premiere)

GRIEG Piano Concerto

BERLIOZ *Symphonie fantastique*

THESE CONCERTS, A PART OF THE BARBRO
AND BERNARD OSHER MASTERWORKS SERIES,
ARE MADE POSSIBLE BY A GENEROUS GIFT FROM
BARBRO AND BERNARD OSHER.

THURSDAY MATINEE CONCERTS ARE ENDOWED
BY A GIFT IN MEMORY OF RHODA GOLDMAN.

HAN-NA CHANG'S APPEARANCE IS SUPPORTED BY
THE LOUISE M. DAVIES GUEST CONDUCTOR FUND.



JANE GLOVER CONDUCTS J.S. BACH MASS IN B MINOR

OPEN
REHEARSAL
APR 22 10AM
THURSDAY-C
APR 22 8PM
FRIDAY-E
APR 23 8PM
SATURDAY-D
APR 24 8PM

J.S. Bach's greatest composition for orchestra, chorus, and vocalists showcases his incredible talent for blending the intimacy of a religious service with the grandeur of a large ensemble. Moments of delicate introspection are juxtaposed with powerful, awe-inspiring, full-throated exaltations of God. His melodies, straightforward and beautiful, are supported by harmonies that nod to his musical predecessors yet feel fresh at every listen. Legendary Bach interpreter Jane Glover leads the San Francisco Symphony and a roster of world-renowned vocalists in this monumental and moving work.

JANE GLOVER, conductor
JOËLLE HARVEY, soprano
ELIZABETH DeSHONG, mezzo-soprano
JONAS HACKER, tenor
TYLER DUNCAN, baritone
SAN FRANCISCO SYMPHONY CHORUS
RAGNAR BOHLIN, director

J. S. BACH Mass in B minor

OPEN REHEARSALS ARE ENDOWED BY A BEQUEST
FROM THE ESTATE OF KATHARINE HANRAHAN.

JANE GLOVER'S APPEARANCE IS SUPPORTED
BY THE LOUISE M. DAVIES GUEST CONDUCTOR FUND.



JURAJ VALČUHA & JOSHUA BELL

THURSDAY-M
APR 29 2PM
FRIDAY-D
APR 30 8PM
SATURDAY-A
MAY 1 8PM

Born and raised in Iran, composer Behzad Ranjbaran has always been mesmerized by the sounds of the *kamancheh*, an ancestor of the Western violin. Dedicated to megastar Joshua Bell, who performs its San Francisco Symphony premiere, Ranjbaran's Violin Concerto plays with east and west, with Persian music and tonalities wafting in and out. Esteemed Slovak conductor Juraj Valčuha and the Orchestra open the program with Pulitzer Prize-winner Caroline Shaw's haunting *Entr'acte*, inspired by Haydn's string quartets. Then, Rachmaninoff's beloved Symphonic Dances—the composer's final manuscript, where we hear him taking leave of his craft with a hymn of thanks and praise.

JURAJ VALČUHA, conductor
JOSHUA BELL, violin

CAROLINE SHAW *Entr'acte*

(San Francisco Symphony Premiere)

BEHZAD RANJBARAN Violin Concerto

(San Francisco Symphony Premiere)

RACHMANINOFF Symphonic Dances

THURSDAY MATINEE CONCERTS ARE ENDOWED BY A
GIFT IN MEMORY OF RHODA GOLDMAN.

JURAJ VALČUHA'S APPEARANCE IS
SUPPORTED BY THE LOUISE M. DAVIES
GUEST CONDUCTORS FUND.



JAMES GAFFIGAN CONDUCTS SCHUMANN 4

OPEN
REHEARSAL
MAY 6 10AM
THURSDAY-B
MAY 6 8PM
FRIDAY-E
MAY 7 8PM
SATURDAY-B
MAY 8 8PM

Chief Conductor of the Lucerne Symphony Orchestra, Principal Guest Conductor of the Netherlands Radio Philharmonic Orchestra, and former San Francisco Symphony resident conductor James Gaffigan leads the Orchestra in Schumann's tempestuous Fourth Symphony, one of the composer's most extraordinary, innovative, and influential works. Vibrant, brilliant, and wild, Francisco Coll's composition Four Iberian Miniatures receives its San Francisco Symphony premiere with violin soloist Noa Wildschut, who makes her debut at these performances. The work is a love letter to Coll's Spanish upbringing, evoking passionate, colorful, and sultry scenes painted by the masterful interplay between soloist and orchestra. Also on the program, Haydn's Symphony No. 88, especially beloved for its cheery finale.

JAMES GAFFIGAN, conductor
NOA WILDSCHUT, violin

HAYDN Symphony No. 88
FRANCISCO COLL Four Iberian Miniatures
(San Francisco Symphony Premiere)
SCHUMANN Symphony No. 4

OPEN REHEARSALS ARE ENDOWED BY A BEQUEST
FROM THE ESTATE OF KATHARINE HANRAHAN.

JAMES GAFFIGAN'S APPEARANCE IS SUPPORTED BY
THE LOUISE M. DAVIES GUEST CONDUCTORS FUND.



PHILIPPE JORDAN CONDUCTS BRITTEN'S WAR REQUIEM

THURSDAY-A
MAY 13 8PM
FRIDAY-F
MAY 14 8PM
SATURDAY-C
MAY 15 8PM

Delve into Britten's poignant take on the cruelty of war in his *War Requiem*, performed by the exemplary forces of Swiss-born conductor Philippe Jordan, the San Francisco Symphony, Chorus, San Francisco Boys Chorus, and superstar vocal soloists. Combining contrasting texts from the traditional Latin mass with poems written in the trenches of World War I, this masterpiece embodies Britten's deeply held pacifist beliefs. When it premiered in 1962 during increased US involvement in Vietnam, a year after the Bay of Pigs and the construction of the Berlin Wall, *War Requiem* stood as a weighty musical statement on a subject Britten felt was of urgent concern to humankind.

PHILIPPE JORDAN, conductor
IAN BOSTRIDGE, tenor
IAIN PATERSON, baritone
SAN FRANCISCO BOYS CHORUS
SAN FRANCISCO SYMPHONY CHORUS
RAGNAR BOHLIN, director

BRITTEN *War Requiem*



BEETHOVEN 5 & JULIA FISCHER

OPEN
REHEARSAL
MAY 20 10AM
THURSDAY-C
MAY 20 8PM
FRIDAY-C
MAY 21 8PM
SATURDAY-D
MAY 22 8PM

German-born Michael Sanderling makes his San Francisco Symphony debut leading the Orchestra in a program that opens with South Korean composer Unsuk Chin's *Frontispiece* for Orchestra, a strikingly inventive work that takes tiny fragments by different composers and stitches them together as a time lapse in the history of music. Then, fiery violinist Julia Fischer performs Britten's heartrending Violin Concerto, written in the turbulent years leading to World War II. The program concludes with fate knocking on our door. Hear the most famous opening notes in all of classical music when the Orchestra performs Beethoven's exhilarating and monumental Fifth Symphony.

MICHAEL SANDERLING, conductor
JULIA FISCHER, violin

UNSUK CHIN *Frontispiece* for Orchestra
(San Francisco Symphony Premiere)
BRITTEN Violin Concerto
BEETHOVEN Symphony No. 5

OPEN REHEARSALS ARE ENDOWED BY A BEQUEST
FROM THE ESTATE OF KATHARINE HANRAHAN.



LUDOVIC MORLOT CONDUCTS DEBUSSY'S LA MER

THURSDAY-B
MAY 27 8PM
FRIDAY-C
MAY 28 8PM
SATURDAY-C
MAY 29 8PM

Acclaimed French conductor Ludovic Morlot makes his San Francisco Symphony debut leading the Orchestra in an evocative all-French program featuring Debussy's rhythmic and sprawling tone poem of the sea, *La Mer*. The evening includes the San Francisco Symphony premiere of Franco-American composer Betsy Jolas' uplifting *A Little Summer Suite*, which delights with its wonderful textures and instrumental colors; and Saint-Saëns' charming and witty final piano concerto, played by versatile French-Canadian pianist Louis Lortie. Opening the concert is Berlioz's lithe and vivid overture to his comic opera *Beatrice et Benedict*.

LUDOVIC MORLOT, conductor
LOUIS LORTIE, piano

BERLIOZ Overture to *Beatrice et Benedict*
SAINT-SAËNS Piano Concerto No. 5,
The Egyptian

BETSY JOLAS *A Little Summer Suite*
(San Francisco Symphony Premiere)

DEBUSSY *La Mer*



ELIM CHAN & HILARY HAHN: CARMEN FANTASY

THURSDAY-M
JUN 3 2PM
FRIDAY-E
JUN 4 8PM
SATURDAY-C
JUN 5 8PM

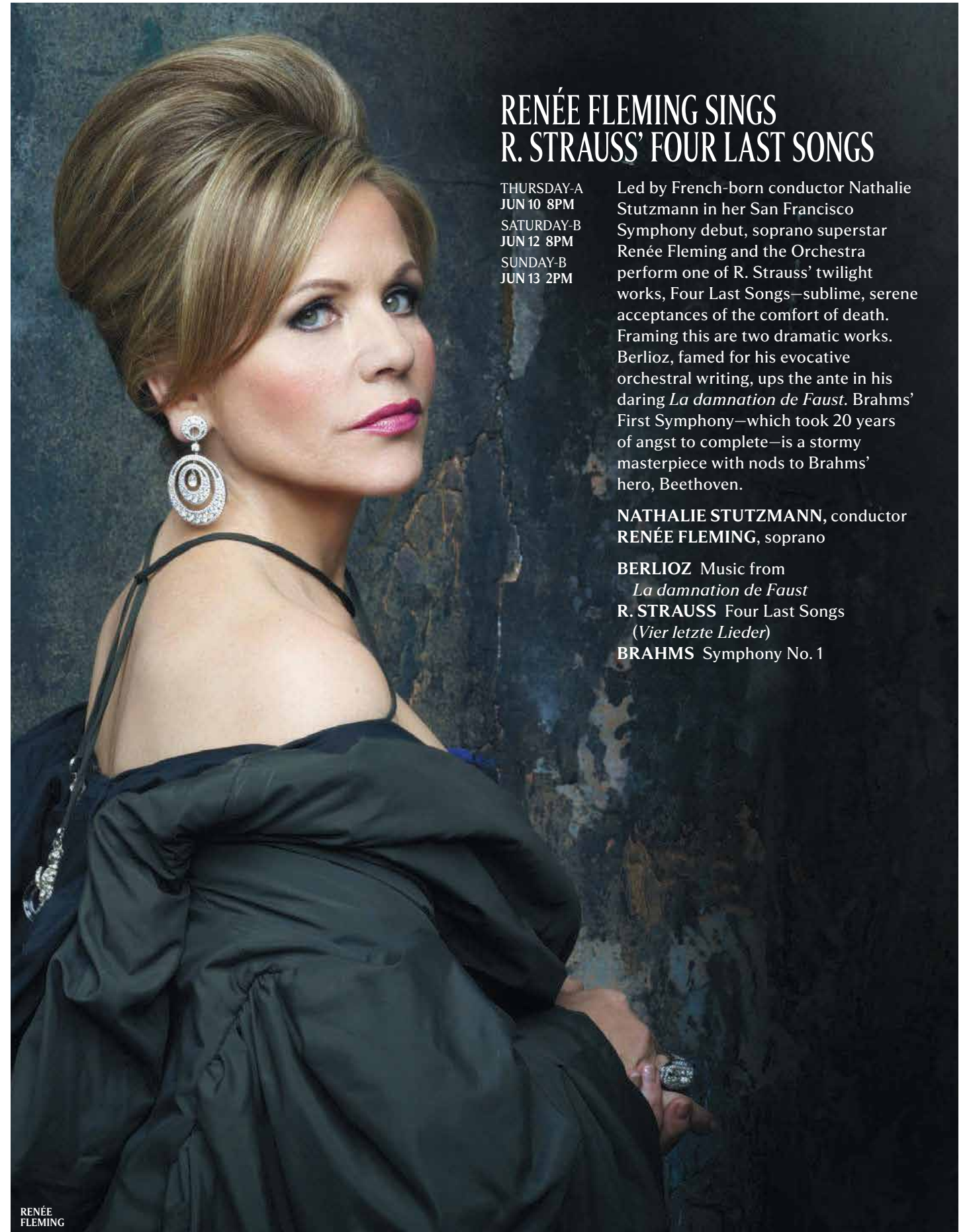
The legendary Hilary Hahn returns to Davies Symphony Hall for two raucous showpieces beginning with Ginastera's tumultuous and dramatic Violin Concerto. Next is Sarasate's dazzling *Carmen Fantasy*, which borrows some of the most memorable melodies from Bizet's fiery opera *Carmen* and reimagines them for violin and orchestra. Making her San Francisco Symphony debut, Elim Chan leads the Orchestra in Rimsky-Korsakov's rambunctious and colorful *Sheherazade*—a piece sure to send sparks flying.

ELIM CHAN, conductor
HILARY HAHN, violin

GINASTERA Violin Concerto
(San Francisco Symphony Premiere)
SARASATE/BIZET *Carmen Fantasy*
for Violin and Orchestra
RIMSKY-KORSAKOV *Sheherazade*

ELIM CHAN'S APPEARANCE IS GENEROUSLY
SUPPORTED BY THE SHENSON YOUNG
ARTIST FUND.

THURSDAY MATINEE CONCERTS ARE ENDOWED
BY A GIFT IN MEMORY OF RHODA GOLDMAN.



RENÉE FLEMING SINGS R. STRAUSS' FOUR LAST SONGS

THURSDAY-A
JUN 10 8PM
SATURDAY-B
JUN 12 8PM
SUNDAY-B
JUN 13 2PM

Led by French-born conductor Nathalie Stutzmann in her San Francisco Symphony debut, soprano superstar Renée Fleming and the Orchestra perform one of R. Strauss' twilight works, *Four Last Songs*—sublime, serene acceptances of the comfort of death. Framing this are two dramatic works. Berlioz, famed for his evocative orchestral writing, ups the ante in his daring *La damnation de Faust*. Brahms' First Symphony—which took 20 years of angst to complete—is a stormy masterpiece with nods to Brahms' hero, Beethoven.

NATHALIE STUTZMANN, conductor
RENÉE FLEMING, soprano

BERLIOZ Music from
La damnation de Faust
R. STRAUSS *Four Last Songs*
(*Vier letzte Lieder*)
BRAHMS Symphony No. 1



ON THE PRECIPICE

JOURNEY WITH ESA-PEKKA SALONEN AND
THE SAN FRANCISCO SYMPHONY THROUGH
MUSIC OF THE WEIMAR REPUBLIC.

SALONEN: MAKE ART, NOT WAR

OPEN
REHEARSAL
JUN 17 10AM
THURSDAY-C
JUN 17 8PM
FRIDAY-D
JUN 18 8PM
SATURDAY-D
JUN 19 8PM
SUNDAY-A
JUN 20 2PM

Salonen and the Orchestra team up with a pair of Collaborative Partners—composer Bryce Dessner and Finnish violinist Pekka Kuusisto—in the US premiere of Dessner's imaginative Violin Concerto. Experience the electrifying energy of music by artists who are not only friends but share the same visionary, cross-genre sensibilities. Then, Hindemith's *Mathis der Maler* (*Mathis the Painter*). After its 1934 premiere, critics and Nazi propaganda officials made their sentiments clear: This was degenerate art. The people, however, felt differently. Hindemith's piece, inspired by the story of a man who decides that he would rather make art not war, has endured as a powerful statement on the artist's role in society. Also on the program: Beethoven's joyous First Symphony.

ESA-PEKKA SALONEN, conductor
PEKKA KUUSISTO, violin

BEETHOVEN Symphony No. 1
BRYCE DESSNER Violin Concerto
(US Premiere, San Francisco Symphony Co-Commission)

HINDEMITH *Mathis der Maler*
(*Mathis the Painter*)

PEKKA KUUSISTO'S APPEARANCE IS SUPPORTED
BY THE SHENSON YOUNG ARTIST FUND.

OPEN REHEARSALS ARE ENDOWED BY A BEQUEST
FROM THE ESTATE OF KATHARINE HANRAHAN.

A SEMI-STAGED EVENT

SALONEN: WEIMAR NIGHTFALL

THURSDAY-B
JUN 24 8PM
FRIDAY-F
JUN 25 8PM
SATURDAY-A
JUN 26 8PM

Esa-Pekka Salonen, the San Francisco Symphony, and an extraordinary roster of performers conclude the season with Weimar Nightfall, a witty and wry semi-staged showcase featuring the charming, sultry, and paradoxical worlds of Weill's *ballet chanté* ("sung ballet"), *The Seven Deadly Sins*. This masterful score is inflected with 1920s jazz, cabaret, and popular song, a captivating complement to the work's edgy narrative, a parable of capitalist exploitation by Bertolt Brecht. Opening this satiric showcase is Hindemith's *Murderer, the Hope of Women*, a blunt commentary on sexual repression, and Weill's *The Berlin Requiem*, a setting of six Brecht poems on the realities of war.

ESA-PEKKA SALONEN, conductor
NORA FISCHER, soprano
SAN FRANCISCO SYMPHONY CHORUS
RAGNAR BOHLIN, director
SIMON MCBURNEY, director
GERARD MCBURNEY, dramaturge
ANNA FLEISCHLE, set designer

HINDEMITH *Mörder, Hoffnung der Frauen* (*Murderer, the Hope of Women*)
(San Francisco Symphony Premiere)

WEILL *Das Berliner Requiem*
(*The Berlin Requiem*)
(San Francisco Symphony Premiere)

WEILL *Die sieben Todsünden*
(*The Seven Deadly Sins*)

THESE PERFORMANCES ARE SUPPORTED BY
THE BARBRO AND BERNARD OSHER STAGED
PRODUCTION FUND.

**EXCLUSIVE
FREE TICKET
OFFER!**

Subscribe by
March 20 and get
free concerts.

SEE PAGE 2.



KUM MO KIM, VIOLIN
SAN FRANCISCO SYMPHONY



SCOTT PINGEL, PRINCIPAL BASS
SAN FRANCISCO SYMPHONY



MICHELE KENNEDY, SOPRANO
SAN FRANCISCO
SYMPHONY CHORUS

2020/21

CONCERT SERIES

THURSDAY

SUBSCRIBE BY FRIDAY, MARCH 20, 2020
AND GET FREE ORCHESTRAL
SERIES CONCERTS!

Purchase subscription package(s) including:
6 or more concerts and get 2 FREE concerts
12 or more concerts and get 4 FREE concerts



ESA-PEKKA SALONEN
& THE SAN FRANCISCO SYMPHONY



AMOS YANG
SAN FRANCISCO SYMPHONY
ASSISTANT PRINCIPAL CELLO

PETER WYRICK
SAN FRANCISCO SYMPHONY
ASSOCIATE PRINCIPAL CELLO
PETER & JACQUELINE HOEFER CHAIR

THURSDAY A

6 CONCERTS AT 8PM

OCT 8	Salonen: <i>Duke Bluebeard's Castle</i>
JAN 28	MTT: Yuja Plays Rach Piano Concerto No. 2
FEB 11	Lunar New Year: Celebrating Asia
MAR 18	Salonen: R. Strauss' <i>Elektra</i>
MAY 13	Philippe Jordan Conducts Britten's <i>War Requiem</i>
JUN 10	Renée Fleming Sings R. Strauss' Four Last Songs

THURSDAY B

6 CONCERTS AT 8PM

NOV 5	MTT: Beethoven's <i>Missa solemnis</i>
FEB 4	Give Me Shelter: Gabriel Kahane's <i>emergency shelter intake form</i>
FEB 18	Blomstedt: Sibelius 4 & Hélène Grimaud
MAY 6	James Gaffigan Conducts Schumann 4
MAY 27	Ludovic Morlot Conducts Debussy's <i>La Mer</i>
JUN 24	Salonen: Weimar Nightfall

THURSDAY C

6 CONCERTS AT 8PM

NOV 12	The Fight for Equality: Julia Wolfe & Florence Price
JAN 14	A New American Sound
MAR 11	Salonen: Scriabin's <i>Prometheus</i>
APR 22	Jane Glover Conducts J.S. Bach Mass in B minor
MAY 20	Beethoven 5 & Julia Fischer
JUN 17	Salonen: Make Art, Not War

THURSDAY OPEN REHEARSAL

7 CONCERTS AT 10AM

JAN 27*	MTT: Yuja Plays Rach Piano Concerto No. 2
FEB 4	Give Me Shelter: Gabriel Kahane's <i>emergency shelter intake form</i>
FEB 11	Lunar New Year: Celebrating Asia
APR 22	Jane Glover Conducts J.S. Bach Mass in B Minor
MAY 6	James Gaffigan Conducts Schumann 4
MAY 20	Beethoven 5 & Julia Fischer
JUN 17	Salonen: Make Art, Not War

OPEN REHEARSALS ARE ENDOWED BY A BEQUEST FROM
THE ESTATE OF KATHARINE HANRAHAN.

OPEN REHEARSALS ARE WORKING REHEARSALS. THE PIECES
REHEARSED ARE AT THE CONDUCTOR'S DISCRETION.

* PLEASE NOTE THIS OPEN REHEARSAL TAKES PLACE ON A WEDNESDAY.

THURSDAY M

RHODA GOLDMAN THURSDAY MATINEE

6 CONCERTS AT 2PM

OCT 15	Salonen: Respighi's <i>Pines of Rome</i>
JAN 21	MTT: Emanuel Ax Plays Mozart
FEB 25	Blomstedt: Mozart & Schubert
APR 8	Berlioz's <i>Symphonie fantastique</i>
APR 29	Juraj Valčuha & Joshua Bell
JUN 3	Elim Chan & Hilary Hahn: <i>Carmen</i> Fantasy

THURSDAY MATINEE CONCERTS ARE ENDOWED BY
A GIFT IN MEMORY OF RHODA GOLDMAN.

THURSDAY MATINEE BUS PACKAGES

Sit back, relax, and let us bring you to the Symphony!
We offer several Bus Packages that make enjoying
San Francisco Symphony concerts easier than ever.
Our round-trip charter bus service will pick you up at a
location close to your home and drop you off at Davies
Symphony Hall for the Rhoda Goldman Thursday
Matinee concerts.

BUS PACKAGE PICKUP IS AVAILABLE IN SEVERAL SURROUNDING COMMUNITIES:

Lodi, Los Gatos, Menlo Park, Modesto, Sacramento/
Davis, San Carlos, Santa Cruz/Scotts Valley, Santa Rosa,
Walnut Creek/Orinda

For Bus Package information,
contact Mary Mercurio at 415.503.5488
or mmercurio@sfsymphony.org

[SFSYMPHONY.ORG/SUBSCRIBE](https://sfsymphony.org/subscribe)

CONCERT SERIES

THURSDAY COMBO Z

THIS PACKAGE COMBINES THU A + B.

12 CONCERTS AT 8PM

OCT 8	Salonen: <i>Duke Bluebeard's Castle</i>
NOV 5	MTT: Beethoven's <i>Missa solemnis</i>
JAN 28	MTT: Yuja Plays Rach Piano Concerto No. 2
FEB 4	Give Me Shelter: Gabriel Kahane's <i>emergency shelter intake form</i>
FEB 11	Lunar New Year: Celebrating Asia
FEB 18	Blomstedt: Sibelius 4 & Hélène Grimaud
MAR 18	Salonen: R. Strauss' <i>Elektra</i>
MAY 6	James Gaffigan Conducts Schumann 4
MAY 13	Philippe Jordan Conducts Britten's <i>War Requiem</i>
MAY 27	Ludovic Morlot Conducts Debussy's <i>La Mer</i>
JUN 10	Renée Fleming Sings R. Strauss' Four Last Songs
JUN 24	Salonen: Weimar Nightfall

FRIDAY

SUBSCRIBE BY FRIDAY, MARCH 20, 2020
AND GET FREE ORCHESTRAL
SERIES CONCERTS!

6 or more concerts and get 2 FREE concerts
12 or more concerts and get 4 FREE concerts
18 or more concerts and get 6 FREE concerts
+ 2 complimentary beverage vouchers
+ 1 additional one-time seat upgrade

FRIDAY C

6 CONCERTS AT 8PM

OCT 2	Salonen: J.S. Bach & Sibelius 1
OCT 30	MTT: Mahler 1
JAN 15	A New American Sound
MAR 12	Salonen: Scriabin's <i>Prometheus</i>
MAY 21	Beethoven 5 & Julia Fischer
MAY 28	Ludovic Morlot Conducts Debussy's <i>La Mer</i>

FRIDAY D

6 CONCERTS AT 8PM

OCT 23	Buchbinder Performs Beethoven Piano Concertos: Nos. 1 & 5
DEC 11	Handel's <i>Messiah</i>
JAN 22	MTT: Emanuel Ax Plays Mozart
MAR 5	Salonen Conducts Salonen & Ravel
APR 30	Juraj Valčuha & Joshua Bell
JUN 18	Salonen: Make Art, Not War

FRIDAY E

6 CONCERTS AT 8PM

OCT 9	Salonen: <i>Duke Bluebeard's Castle</i>
NOV 20	Tchaikovsky's <i>Pathétique</i>
MAR 26	Daniel Harding Conducts <i>Ein Heldenleben</i>
APR 23	Jane Glover Conducts J.S. Bach Mass in B minor
MAY 7	James Gaffigan Conducts Schumann 4
JUN 4	Elim Chan & Hilary Hahn: <i>Carmen Fantasy</i>



JULIA
FISCHER

FRIDAY F

6 CONCERTS AT 8PM

OCT 16	Salonen: Respighi's <i>Pines of Rome</i>
NOV 6	MTT: Beethoven's <i>Missa solemnis</i>
FEB 19	Blomstedt: Sibelius 1 & Hélène Grimaud
APR 9	Berlioz's <i>Symphonie fantastique</i>
MAY 14	Philippe Jordan Conducts Britten's <i>War Requiem</i>
JUN 25	Salonen: Weimar Nightfall

FRIDAY COMBO A

THIS PACKAGE COMBINES FRI C + E.
12 CONCERTS AT 8 PM

OCT 2	Salonen: J.S. Bach & Sibelius 1
OCT 9	Salonen: <i>Duke Bluebeard's Castle</i>
OCT 30	MTT: Mahler 1
NOV 20	Tchaikovsky's <i>Pathétique</i>
JAN 15	A New American Sound
MAR 12	Salonen: Scriabin's <i>Prometheus</i>
MAR 26	Daniel Harding Conducts <i>Ein Heldenleben</i>
APR 23	Jane Glover Conducts J.S. Bach Mass in B minor
MAY 7	James Gaffigan Conducts Schumann 4
MAY 21	Beethoven 5 & Julia Fischer
MAY 28	Ludovic Morlot Conducts Debussy's <i>La Mer</i>
JUN 4	Elim Chan & Hilary Hahn: <i>Carmen Fantasy</i>

FRIDAY COMBO B

THIS PACKAGE COMBINES FRI D + F.
12 CONCERTS AT 8PM

OCT 16	Salonen: Respighi's <i>Pines of Rome</i>
OCT 23	Buchbinder Performs Beethoven Piano Concertos: Nos. 1 & 5
NOV 6	MTT: Beethoven's <i>Missa solemnis</i>
DEC 11	Handel's <i>Messiah</i>
JAN 22	MTT: Emanuel Ax Plays Mozart
FEB 19	Blomstedt: Sibelius 4 & Hélène Grimaud
MAR 5	Salonen Conducts Salonen & Ravel
APR 9	Berlioz's <i>Symphonie fantastique</i>
APR 30	Juraj Valčuha & Joshua Bell
MAY 14	Philippe Jordan Conducts Britten's <i>War Requiem</i>
JUN 18	Salonen: Make Art, Not War
JUN 25	Salonen: Weimar Nightfall

FRIDAY COMBO Z

THIS PACKAGE COMBINES FRI C + D + E + F.
24 CONCERTS AT 8PM

OCT 2	Salonen: J.S. Bach & Sibelius 1
OCT 9	Salonen: <i>Duke Bluebeard's Castle</i>
OCT 16	Salonen: Respighi's <i>Pines of Rome</i>
OCT 23	Buchbinder Performs Beethoven Piano Concertos: Nos. 1 & 5
OCT 30	MTT: Mahler 1
NOV 6	MTT: Beethoven's <i>Missa solemnis</i>
NOV 20	Tchaikovsky's <i>Pathétique</i>
DEC 11	Handel's <i>Messiah</i>
JAN 15	A New American Sound
JAN 22	MTT: Emanuel Ax Plays Mozart
FEB 19	Blomstedt: Sibelius 4 & Hélène Grimaud
MAR 5	Salonen Conducts Salonen & Ravel
MAR 12	Salonen: Scriabin's <i>Prometheus</i>
MAR 26	Daniel Harding Conducts <i>Ein Heldenleben</i>
APR 9	Berlioz's <i>Symphonie fantastique</i>
APR 23	Jane Glover Conducts J.S. Bach Mass in B minor
APR 30	Juraj Valčuha & Joshua Bell
MAY 7	James Gaffigan Conducts Schumann 4
MAY 14	Philippe Jordan Conducts Britten's <i>War Requiem</i>
MAY 21	Beethoven 5 & Julia Fischer
MAY 28	Ludovic Morlot Conducts Debussy's <i>La Mer</i>
JUN 4	Elim Chan & Hilary Hahn: <i>Carmen Fantasy</i>
JUN 18	Salonen: Make Art, Not War
JUN 25	Salonen: Weimar Nightfall



NEW TO THE SAN FRANCISCO SYMPHONY?

Friday evenings are for you.
Yes, you!
\$25 per concert!

You *love* music and you're curious about the San Francisco Symphony. There's too much to choose from (and you can't just pick one). That's why we're giving you a really good deal so you can experience all that we have to offer.

Join us on Friday evenings for:

- A really good deal (6 concerts in the 2nd Tier for \$150)*
- An extraordinary lineup of concerts with the San Francisco Symphony
- Superstar artists including Joshua Bell, Daniil Trifonov, and more
- The party is on the 2nd Tier! Special craft beers and more

PLUS, you'll receive Subscriber Benefits which includes easy ticket exchanges (*plans change, visit us on a different night*). See page 2 to explore the full list of benefits.

***DID YOU KNOW?** San Francisco Symphony audiophiles feel that the sound is best in the 2nd Tier.

SATURDAY

SUBSCRIBE BY FRIDAY, MARCH 20, 2020
AND GET FREE ORCHESTRAL
SERIES CONCERTS!

Purchase subscription package(s) including:
6 or more concerts and get 2 FREE concerts
12 or more concerts and get 4 FREE concerts



SATURDAY A

7 CONCERTS AT 8PM

OCT 3	Salonen: J.S. Bach & Sibelius 1
NOV 14	The Fight for Equality: Julia Wolfe & Florence Price
FEB 6	Give Me Shelter: Gabriel Kahane's <i>emergency shelter intake form</i>
FEB 27	Blomstedt: Mozart & Schubert
MAR 27	Daniel Harding Conducts <i>Ein Heldenleben</i>
MAY 1	Juraj Valčuha & Joshua Bell
JUN 26	Salonen: Weimar Nightfall

SATURDAY B

7 CONCERTS AT 8PM

OCT 17	Salonen: Respighi's <i>Pines of Rome</i>
NOV 21	Tchaikovsky's <i>Pathétique</i>
JAN 23	MTT: Emanuel Ax Plays Mozart
MAR 6	Salonen Conducts Salonen & Ravel
APR 10	Berlioz's <i>Symphonie fantastique</i>
MAY 8	James Gaffigan Conducts Schumann 4
JUN 12	Renée Fleming Sings R. Strauss' Four Last Songs

SATURDAY C

7 CONCERTS AT 8PM

OCT 24	Buchbinder Performs Beethoven Piano Concertos: Nos. 2, 3, & 4
DEC 12	Handel's <i>Messiah</i>
JAN 30	MTT: Yuja Plays Rach Piano Concerto No. 2
MAR 13	Salonen: Scriabin's <i>Prometheus</i>
MAY 15	Philippe Jordan Conducts Britten's <i>War Requiem</i>
MAY 29	Ludovic Morlot Conducts Debussy's <i>La Mer</i>
JUN 5	Elim Chan & Hilary Hahn: <i>Carmen</i> Fantasy

SATURDAY D

7 CONCERTS AT 8PM

OCT 31	MTT: Mahler 1
JAN 16	A New American Sound
FEB 13	Lunar New Year: Celebrating Asia
MAR 20	Salonen: R. Strauss' <i>Elektra</i>
APR 24	Jane Glover Conducts J.S. Bach Mass in B minor
MAY 22	Beethoven 5 & Julia Fischer
JUN 19	Salonen: Make Art, Not War

SATURDAY COMBO Z

THIS PACKAGE COMBINES SAT A + B.
14 CONCERTS AT 8PM

OCT 3	Salonen: J.S. Bach & Sibelius 1
OCT 17	Salonen: Respighi's <i>Pines of Rome</i>
NOV 14	The Fight for Equality: Julia Wolfe & Florence Price
NOV 21	Tchaikovsky's <i>Pathétique</i>
JAN 23	MTT: Emanuel Ax Plays Mozart
FEB 6	Give Me Shelter: Gabriel Kahane's <i>emergency shelter intake form</i>
FEB 27	Blomstedt: Mozart & Schubert
MAR 6	Salonen Conducts Salonen & Ravel
MAR 27	Daniel Harding Conducts <i>Ein Heldenleben</i>
APR 10	Berlioz's <i>Symphonie fantastique</i>
MAY 1	Juraj Valčuha & Joshua Bell
MAY 8	James Gaffigan Conducts Schumann 4
JUN 12	Renée Fleming Sings R. Strauss' Four Last Songs
JUN 26	Salonen: Weimar Nightfall

SUNDAY

SUBSCRIBE BY FRIDAY, MARCH 20, 2020
AND GET FREE ORCHESTRAL
SERIES CONCERTS!

Purchase subscription package(s) including:
6 or more concerts and get 2 FREE concerts
12 or more concerts and get 4 FREE concerts

SUNDAY MATINEE A

6 CONCERTS AT 2PM

OCT 11	Salonen: <i>Duke Bluebeard's Castle</i>
NOV 1	MTT: Mahler 1
NOV 22	Tchaikovsky's <i>Pathétique</i>
FEB 28	Blomstedt: Mozart & Schubert
MAR 28	Daniel Harding Conducts <i>Ein Heldenleben</i>
JUN 20	Salonen: Make Art, Not War

SUNDAY MATINEE B

6 CONCERTS AT 2PM

OCT 25	Buchbinder Performs Beethoven Piano Concertos: Nos. 1 & 5
NOV 8	MTT: Beethoven's <i>Missa solemnis</i>
FEB 21	Blomstedt: Sibelius 4 & Hélène Grimaud
MAR 7	Salonen Conducts Salonen & Ravel
MAR 22*	Salonen: R. Strauss' <i>Elektra</i>
JUN 13	Renée Fleming Sings R. Strauss' Four Last Songs

SUNDAY MATINEE COMBO Z

THIS PACKAGE COMBINES SUN A + B.
12 CONCERTS AT 2PM

OCT 11	Salonen: <i>Duke Bluebeard's Castle</i>
OCT 25	Buchbinder Performs Beethoven Piano Concertos: Nos. 1 & 5
NOV 1	MTT: Mahler 1
NOV 8	MTT: Beethoven's <i>Missa solemnis</i>
NOV 22	Tchaikovsky's <i>Pathétique</i>
FEB 21	Blomstedt: Sibelius 4 & Hélène Grimaud
FEB 28	Blomstedt: Mozart & Schubert
MAR 7	Salonen Conducts Salonen & Ravel
MAR 22*	Salonen: R. Strauss' <i>Elektra</i>
MAR 28	Daniel Harding Conducts <i>Ein Heldenleben</i>
JUN 13	Renée Fleming Sings R. Strauss' Four Last Songs
JUN 20	Salonen: Make Art, Not War

* PLEASE NOTE THIS CONCERT TAKES PLACE ON A MONDAY AT 7:30PM



ISRAEL
PHILHARMONIC



MIRGA
GRAŽINYTĖ-TYLA



CARLOS
MIGUEL
PRIETO



DANIIL
TRIFONOV



CHINA
PHILHARMONIC
ORCHESTRA

GREAT PERFORMERS

WE WELCOME TOP-TIER ENSEMBLES AND ARTISTS FROM ACROSS THE GLOBE TO THE DAVIES SYMPHONY HALL STAGE.

GREAT PERFORMERS A

6 CONCERTS AT 7:30PM

- OCT 18 Mirga, Sheku Kanneh-Mason, & City of Birmingham Symphony Orchestra
- OCT 26 Beethoven250: Piano Recital with Rudolf Buchbinder
- NOV 10 Israel Philharmonic Performs Mozart & *The Rite of Spring*
- JAN 24 Bach Collegium Japan Performs Mozart's Mass in C minor
- FEB 14 Piano Recital with Daniil Trifonov
- MAR 21 Piano Recital: Lang Lang Plays *Goldberg Variations*

GREAT PERFORMERS B

6 CONCERTS AT 7:30PM

- OCT 19 Mirga, Gidon Kremer, & City of Birmingham Symphony Orchestra
- NOV 8 China Philharmonic Orchestra Performs Rachmaninoff
- DEC 6 Chamber Music Recital: Batiashvili, Capuçon, & Thibaudet
- FEB 8 Violin Recital with Joshua Bell
- MAR 7 Carlos Miguel Prieto & Orquestra Sinfónica Nacional
- APR 5 Piano Recital: Jean-Yves Thibaudet Performs Debussy

GREAT PERFORMERS COMBO Z

12 CONCERTS AT 7:30PM

- OCT 18 Mirga, Sheku Kanneh-Mason, & City of Birmingham Symphony Orchestra
- OCT 19 Mirga, Gidon Kremer, & City of Birmingham Symphony Orchestra
- OCT 26 Beethoven250: Piano Recital with Rudolf Buchbinder
- NOV 8 China Philharmonic Orchestra Performs Rachmaninoff
- NOV 10 Israel Philharmonic Performs Mozart & *The Rite of Spring*
- DEC 6 Chamber Music Recital: Batiashvili, Capuçon, & Thibaudet
- JAN 24 Bach Collegium Japan Performs Mozart's Mass in C minor
- FEB 8 Violin Recital with Joshua Bell
- FEB 14 Piano Recital with Daniil Trifonov
- MAR 7 Carlos Miguel Prieto & Orquestra Sinfónica Nacional
- MAR 21 Piano Recital: Lang Lang Plays *Goldberg Variations*
- APR 5 Piano Recital: Jean-Yves Thibaudet Performs Debussy

SUBSCRIBE BY FRIDAY, MARCH 20, 2020 AND GET FREE ORCHESTRAL SERIES CONCERTS!

Purchase subscription package(s) including:
6 or more concerts and get 2 FREE concerts
12 or more concerts and get 4 FREE concerts



PRESENTING SPONSOR
OF THE GREAT
PERFORMERS SERIES



SKYFALL LICENSED BY MGM. SKYFALL © 2012 DANJAO & MGM. SKYFALL, 007™ AND RELATED JAMES BOND INDICIA © 1962-2020 DANJAO & MGM. SKYFALL, 007™ AND RELATED JAMES BOND TRADEMARKS ARE TRADEMARKS OF DANJAO. ALL RIGHTS RESERVED.



FILM

ENJOY THE MAGIC OF CINEMA LIKE NEVER BEFORE—WITH THE SCORE PERFORMED LIVE BY THE SAN FRANCISCO SYMPHONY.



THE PRINCESS BRIDE IN CONCERT
NOV 27 & 28
Fencing, fighting, torture, revenge, giants, monsters, chases, escapes, true love, miracles! Experience one of the most beloved films of all time as never before with the power of the San Francisco Symphony performing the entire Mark Knopfler score of this fairytale adventure live-to-picture!
© THE PRINCESS BRIDE LIMITED. ALL RIGHTS RESERVED.



CROUCHING TIGER, HIDDEN DRAGON: THE FILM WITH ORCHESTRA
JAN 8 & 9
Directed by the legendary Ang Lee and winner of four Academy Awards, don't miss this visually dazzling martial arts epic come to life on the big screen as the San Francisco Symphony performs Tan Dun's Oscar-winning score in the world premiere of the film with orchestra.
© 2000 UCV, LLC FOR THE UNITED STATES AND CANADA AND THEIR RESPECTIVE TERRITORIES AND POSSESSIONS.



SKYFALL IN CONCERT
APR 2 & 3
Daniel Craig returns as the legendary secret agent in the franchise's most successful film to date. Now you will be able to experience composer Thomas Newman's BAFTA-winning original score performed live by the San Francisco Symphony in sync to the picture!



THE GODFATHER LIVE
APR 16 & 17
Relive the chilling portrait of the Sicilian clan's rise to power as the San Francisco Symphony performs Nino Rota's unforgettable score live to picture. Directed by Francis Ford Coppola and featuring landmark performances from screen legends Marlon Brando and Al Pacino, this ten-time Academy Award®-winning film is a concert experience "you can't refuse!"

FILM A
4 FILMS WITH LIVE ORCHESTRA
FRIDAY AT 7:30PM

NOV 27	<i>The Princess Bride in Concert</i>
JAN 8	<i>Crouching Tiger, Hidden Dragon: The Film with Orchestra</i>
APR 2	<i>Skyfall in Concert</i>
APR 16	<i>The Godfather Live</i>

FILM B
4 FILMS WITH LIVE ORCHESTRA
SATURDAY AT 7:30PM

NOV 28	<i>The Princess Bride in Concert</i>
JAN 9	<i>Crouching Tiger, Hidden Dragon: The Film with Orchestra</i>
APR 3	<i>Skyfall in Concert</i>
APR 17	<i>The Godfather Live</i>



CHAMBER MUSIC CONCERTS

Experience music curated and performed by small ensembles of San Francisco Symphony musicians.

CHAMBER MUSIC
AT DAVIES SYMPHONY HALL
6 SUNDAY CONCERTS AT 2PM

NOV 29
JAN 17
FEB 14
APR 18
MAY 16
JUN 6

CHAMBER MUSIC
AT GUNN THEATER AT THE LEGION OF HONOR
4 SUNDAY CONCERTS AT 2PM

NOV 29
MAR 14
APR 11
MAY 23



YOUTH ORCHESTRA

The superstars of tomorrow are on your doorstep! Experience the phenomenal San Francisco Symphony Youth Orchestra—featuring more than 100 of the Bay Area’s brightest young talent under the baton of Wattis Foundation Music Director Daniel Stewart—in exhilarating showcases of music’s most virtuosic repertoire.

3 SUNDAY CONCERTS AT 2PM

NOV 15
MAR 14
MAY 23

SUPPORTED BY
BANK OF AMERICA



MUSIC FOR FAMILIES

Share the joy of music with all your loved ones. Discover how music speaks to young listeners ages 5–12 and longtime fans alike, through enriching, interactive performances and fun-filled pre-concert activities.

4 SATURDAY CONCERTS AT 2PM
(ACTIVITIES BEGIN AT 1PM)

NOV 14 Music around the World—Percussion
DEC 12 Superheroes
FEB 6 Birthday Bash!
MAY 8 Reduce, Reuse, Recycle

SUPPORTED BY
Chevron



ORGAN

There’s nothing quite like being engulfed in the immense power and beauty of sound. Discover Davies Symphony Hall’s gleaming, 8,264-pipe Ruffatti organ—the largest of its kind in North America—through awe-inspiring performances by the instrument’s most celebrated players.

3 SUNDAY CONCERTS AT 3PM

FEB 7 Christian Schmitt
APR 11 TBD
MAY 9 Monica Czausz

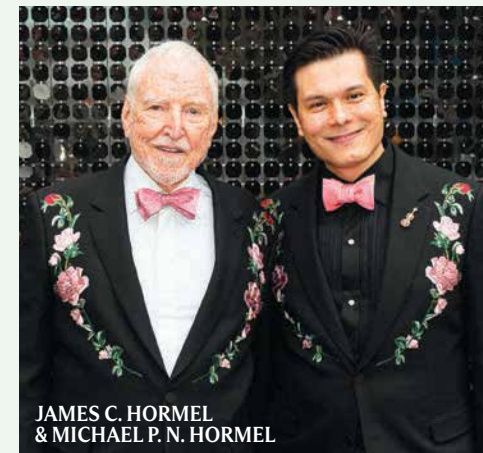
Maximize your Sunday musical experience by adding on another Sunday series.
Youth Orchestra packages start at \$15 per concert.

SPECIAL CONCERTS

BE ONE OF THE FIRST TO PURCHASE ADVANCE TICKETS
TO THESE IN-DEMAND CONCERTS
IN ADDITION TO YOUR SUBSCRIPTION PACKAGE.



SAKURAKO
FISHER



JAMES C. HORMEL
& MICHAEL P. N. HORMEL



ESA-PEKKA
SALONEN



SAKURAKO & WILLIAM FISHER

OPENING NIGHT GALA IN HONOR OF SAKURAKO & WILLIAM FISHER

CO-CHAIRS JAMES C. HORMEL & MICHAEL P. N. HORMEL

WEDNESDAY
SEP 30 8PM

It's a new era for the San Francisco Symphony! Join Esa-Pekka Salonen in his inaugural season as Music Director, the San Francisco Symphony, and our Collaborative Partners for a spectacular celebration that honors San Francisco Symphony President Sakurako Fisher's extraordinary spirit and leadership. From the pre-concert sparkling wine promenade, to the one-of-a-kind concert, to the dazzling after-party, you will be a part of San Francisco history while toasting the arts in style.

FOR AN ELEVATED EXPERIENCE, UPGRADE
TO ONE OF FOUR UNIQUE VIP DINNER
PACKAGES.

CALL THE VOLUNTEER COUNCIL
FOR MORE INFORMATION AT 415.503.5500.

ESA-PEKKA SALONEN, conductor
COLLABORATIVE PARTNERS





CHICK
COREA

CHICK COREA WITH THE SAN FRANCISCO SYMPHONY

TUESDAY
OCT 27 8PM

Living jazz legend and 22-time Grammy winner Chick Corea joins the San Francisco Symphony in an exciting program that features Gershwin’s electrifying *Rhapsody in Blue*.

JOSHUA WEILERSTEIN, conductor
CHICK COREA, piano

PROGRAM TO INCLUDE:
GERSHWIN *Rhapsody in Blue*



DÍA DE LOS MUERTOS COMMUNITY CONCERT

SATURDAY
NOV 7 2PM

Join us at Davies Symphony Hall for a vibrant celebration of Latin American music and culture at our annual Day of the Dead celebration! Arrive early for live music, dancing, colorful altars, and folk art in the lobby.

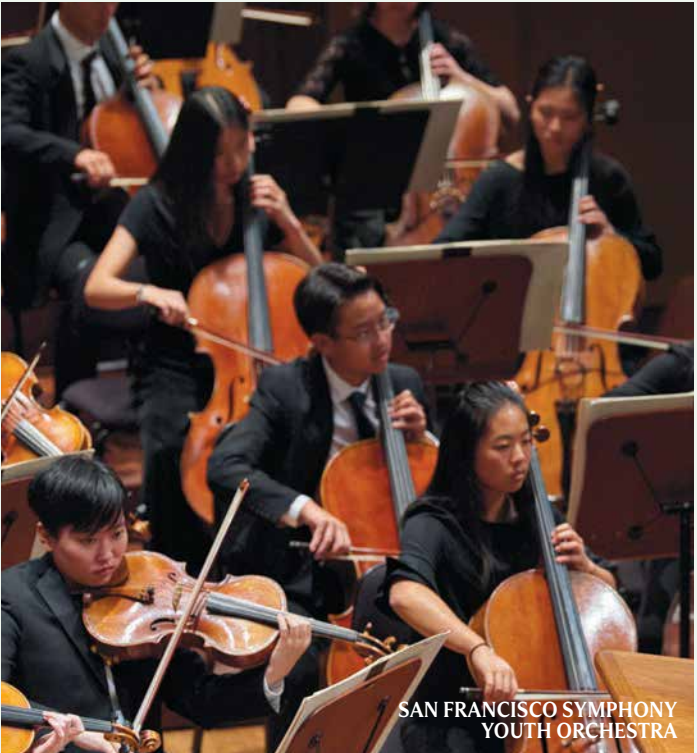
DECK THE HALL

SUNDAY
DEC 6 11AM
DEC 6 3PM

Deck the Hall is the perfect way to make your family’s holiday season merry and bright. Enjoy a concert of festive favorites and sing-alongs with members of the San Francisco Symphony, guest artists, and special appearances by beloved holiday characters. Tickets include post-concert festivities with entertainment, arts and crafts, and refreshments.

TO MAKE THE EXPERIENCE EVEN MORE MEMORABLE, ORDER A VIP PACKAGE THAT INCLUDES PREMIUM CONCERT SEATING PLUS AN EXCLUSIVE, FUN-FILLED PRE-CONCERT PARTY.

CALL THE SAN FRANCISCO SYMPHONY VOLUNTEER COUNCIL AT 415.503.5500 OR VISIT [SFSYMPHONY.ORG/DECK](https://www.sfsymphony.org/deck) FOR FURTHER DETAILS.



SAN FRANCISCO SYMPHONY
YOUTH ORCHESTRA

PETER AND THE WOLF

SUNDAY
DEC 13 2PM

Prokofiev’s timeless tale of a boy and his animal friends’ bravery is brought to life! Experience Wattis Foundation Music Director Daniel Stewart, the San Francisco Symphony Youth Orchestra, and a special guest narrator performing this classic musical fable, along with other season and holiday favorites.

DANIEL STEWART,
Wattis Foundation Music Director
**SAN FRANCISCO SYMPHONY
YOUTH ORCHESTRA**



ITZHAK
PERLMAN

AN EVENING WITH ITZHAK PERLMAN

SUNDAY
JAN 10 7:30PM

Learn more about the legendary “man behind the music” at An Evening with Itzhak Perlman. This multi-media program, curated by Tony-award winning director Dan Sullivan, interweaves storytelling by Perlman alongside personal photos, clips pulled from the Grammy-nominated *Itzhak* documentary, and music-making with Perlman’s longtime pianist and friend, Rohan De Silva.

ITZHAK PERLMAN, violin
ROHAN DE SILVA, piano



VALERY GERGIEV & MARIINSKY ORCHESTRA

MONDAY
FEB 1 7:30PM

The renowned Mariinsky Orchestra, founded more than 200 years ago in Saint Petersburg, performs the music of Debussy and Tchaikovsky under the baton of Valery Gergiev. The performance features a solo turn by the remarkable pianist Alexandre Kantorow.

MARIINSKY ORCHESTRA
VALERY GERGIEV, conductor
ALEXANDRE KANTOROW, piano

DEBUSSY Prelude to *The Afternoon of a Faun*
TCHAIKOVSKY Piano Concerto No. 2
RACHMANINOFF Symphony No. 2



CHINESE NEW YEAR CONCERT & BANQUET

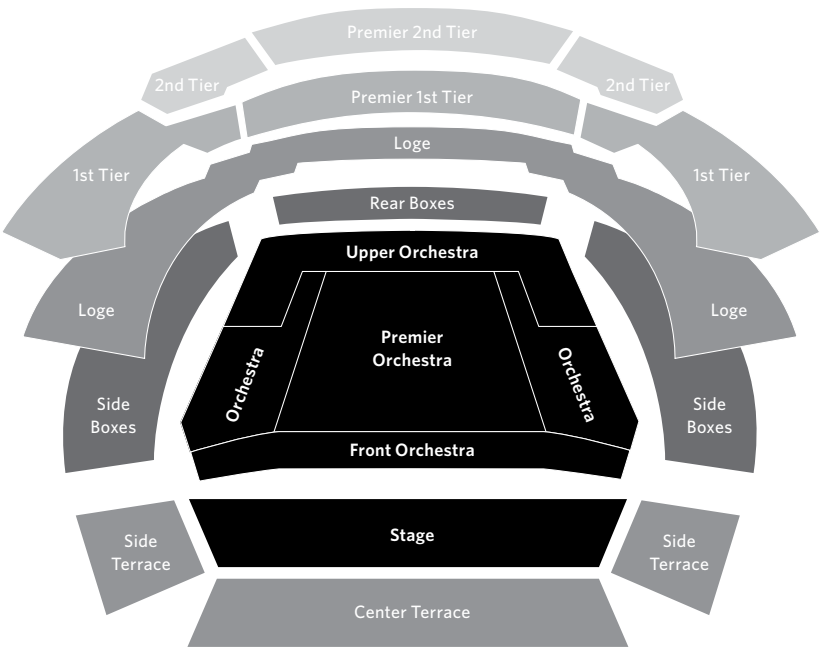
SATURDAY
FEB 20 4PM

The Chinese New Year Concert and Banquet is an elegant, colorful celebration of the Lunar New Year with the San Francisco Symphony. Drawing upon vibrant Asian traditions, past and present, guests enjoy the Festival Reception's host of activities followed by a performance of Eastern and Western repertoire by the San Francisco Symphony and notable guest artists.

Continue the festivities after the concert by purchasing a ticket to the dramatic and exciting Banquet. Call the San Francisco Symphony Volunteer Council at 415.503.5500 for further details.

HOW TO SUBSCRIBE

SECURE THE BEST SEATS AT THE BEST PRICE BY PURCHASING YOUR SEASON TICKETS TODAY!



SEATING CHART

New **lower prices** for all Second Tier packages on Friday nights!

➤ **ONLINE**
sfsymphony.org/subscribe

☎ **CALL THE BOX OFFICE**
415.864.6000

📍 **IN PERSON**
Davies Symphony Hall
Box Office

Mon–Fri: 10am–6pm
Sat: Noon–6pm

✉ **MAIL THE ORDER FORM WITH PAYMENT**
Patron Services
San Francisco Symphony
Davies Symphony Hall
201 Van Ness Avenue
San Francisco, CA 94102

SYMPHONY FAQ

Whether it's your first time at the symphony or your first time at this Symphony, we've got you covered.

We can't wait for you to join us this season. Check out our First Timer's Guide online, and email or call us at 415.864.6000 with any questions!

WHAT SHOULD YOU WEAR?
Wear what you want. Want to dress up and make a special occasion of it? Go for it. But you won't be alone if you dress casually either. This is SF after all!

WHAT SHOULD YOU EXPECT?
Stop by the lobby bar, grab a drink, and hang out with other concertgoers. Or join us for our insightful pre-concert discussions in the hall. Then, when it's concert time, take your seat and enjoy the music. Grab a program book so you can follow along with the music.

WHEN SHOULD YOU CLAP?
Whether it's a symphony with 4 movements or a concerto with 3, most people applaud only after the last movement.

2020/21 SEASON PRICE CHART

GET THE BEST PRICES
OF THE SEASON BY
SUBSCRIBING TODAY!

ORCHESTRAL SERIES																				GREAT PERFORMERS SERIES			OTHER CONCERT SERIES							
Series Pricing	THU A	THU B	THU C	THU M	THU Z	FRI C	FRI D	FRI E	FRI F	FRI A	FRI B	FRI Z	SAT A	SAT B, C	SAT D	SAT Z	SUN A	SUN B	SUN Z	GPS A	GPS B	GPS Z	Music for Families (Adult)	Music for Families (Child)	FILM A, B	Chamber Music	Organ	Youth Orchestra	Open Rehearsals	Legion of Honor
No. of Concerts	6	6	6	6	12	6	6	6	6	12	12	24	7	7	7	14	6	6	12	6	6	12	4	4	4	6	3	3	7	4
Loge	948	900	870	924	1848	900	954	840	930	1740	1884	3624	1019	1079	1025	2098	870	954	1824	808	722	1530	208	104	620	198	120	Open Seating Package \$45 RESERVED Seating in Loge/Side Box \$165	Open Seating Package \$203 RESERVED Seating in Loge/Side Box/Rear Box/ Premier Orch \$273	-
Orchestra Side Box	948	900	870	924	1848	900	954	840	930	1740	1884	3624	1019	1079	1025	2098	870	954	1824	808	722	1530	208	104	620	198	120			-
Premier Orchestra	772	720	726	746	1492	720	740	732	714	1452	1454	2906	877	865	845	1742	726	740	1466	662	590	1252	160	80	480	198	120			-
Orchestra	588	540	510	564	1128	540	594	480	570	1020	1164	2184	599	659	605	1258	510	594	1104	538	482	1020	136	68	380	198	120			300
Front Orchestra	492	444	438	468	936	444	474	432	450	876	924	1800	531	543	513	1074	438	474	912	482	430	912	136	68	316	198	90			-
Orchestra Rear Box	444	404	394	424	848	404	434	384	414	788	848	1636	473	493	463	966	394	434	828	392	350	742	128	64	280	198	90			-
Premier 1st Tier	507	455	436	481	962	455	500	417	474	872	974	1846	522	560	515	1082	436	500	936	454	406	860	136	68	316	-	-			-
1st Tier	418	370	350	394	788	370	414	330	390	700	804	1504	419	459	415	878	350	414	764	347	308	655	128	64	260	-	-			-
Upper Orchestra	283	233	226	258	516	233	265	219	240	452	505	957	284	298	266	582	226	265	491	379	336	715	136	68	260	198	90			-
Side Terrace ◊	478	430	410	454	908	430	474	390	450	820	924	1744	489	529	485	1018	410	474	884	388	342	730	104	52	-	198	-			-
Premier 2nd Tier	315	275	256	295	590	150	150	150	150	300	300	600	306	344	305	650	256	314	570	292	258	550	104	52	196	-	-			-
2nd Tier	248	200	190	224	448	150	150	150	150	300	300	600	239	259	225	498	190	234	424	241	216	457	88	44	140	-	-			-
Center Terrace	-	-	-	-	-	-	-	-	-	-	-	-	-	-	-	-	-	-	-	-	-	-	56	28	-	-	-			-
Pre-paid Parking	150	150	150	-	300	150	150	150	150	300	300	600	175	175	175	350	150	150	300	150	150	300	100	-	100	150	75	75	175	-

Friday concerts in Premier 2nd Tier and 2nd Tier are **\$25 per concert**.

Add on these individual concerts to your subscription & lock-in the lowest prices of the season!*

ORCHESTRAL SERIES CONCERTS				GREAT PERFORMERS SERIES CONCERTS			Film Series Concerts				SPECIAL CONCERTS				
Subscriber Single Ticket Pricing	All Concerts**	Group 1	Group 2	Group 3	Group 4	Group 5	All Concerts	Opening Night Gala†	Día de los Muertos† Kids Half Price	Deck the Hall†	<i>Peter and the Wolf</i> Kids Half Price	Chinese New Year†	Chick Corea with the SF Symphony	An Evening with Itzhak Perlman	Mariinsky Orchestra
Date	Excludes Group 1 & Group 2 concerts	See concert list at right	See concert list at right	See concert list at right	See concert list at right	See concert list at right	-	9/30	11/7	12/6	12/13	2/20	10/27	1/10	2/1
Loge	155	125	179	85	95	181	155	-	90	-	85	-	109	189	109
Orchestra Side Box	155	125	179	85	95	181	155	-	90	-	85	-	109	189	109
Premier Orchestra	119	125	145	65	79	151	120	-	80	-	75	90	89	159	89
Orchestra	95	65	119	55	65	121	95	-	70	70	65	76	79	129	79
Front Orchestra	75	69	99	45	59	111	79	-	60	-	65	-	69	119	69
Orchestra Rear Box	69	59	89	35	49	91	70	-	50	48	59	60	59	99	59
Premier 1st Tier	79	60	105	45	55	103	79	-	50	48	59	60	69	115	69
1st Tier	65	45	89	35	40	79	65	360	40	48	49	60	49	89	49
Upper Orchestra	40	33	65	35	45	88	65	-	50	48	59	60	59	99	59
Side Terrace ◊	75	55	99	25	50	96	-	-	-	-	49	-	59	-	59
Premier 2nd Tier ‡	49	30	69	25	35	69	49	-	35	-	35	35	49	79	49
2nd Tier ‡	35	25	59	25	29	54	35	225	25	-	25	25	39	65	39
Pre-paid Parking	25	25	25	25	25	25	25	-	25	-	25	-	25	25	25

*Prices subject to change after 3/20/20.
**All Orchestral Series concerts excluding concerts in Group 1 and Group 2.
†Premium seats, which include pre-or-post concert packages are available.
For more information, please contact the San Francisco Volunteer Council at 415.503.5500.

‡Special offer: Friday concerts in Premier 2nd Tier and 2nd Tier are \$25 per concert.
◊ The Side Terrace may not be available for all Orchestral Series concerts.

Your ticket price includes a Hall Improvement Fee, which allows the San Francisco Symphony to elevate and refresh the concert experience through physical improvements and enriched offerings in our lobbies and hall before, during, and after performances.

GROUP 1	NOV 12 & 14	The Fight for Equality: Julia Wolfe & Florence Price
	NOV 20–22	Tchaikovsky's <i>Pathétique</i>
	JAN 14–16	A New American Sound
	FEB 4 & 6	Give Me Shelter: Gabriel Kahane's <i>emergency shelter intake form</i>
	FEB 11 & 13	Lunar New Year: Celebrating Asia
	MAR 26–28	Daniel Harding Conducts <i>Ein Heldenleben</i>
	MAY 27–29	Ludovic Morlot Conducts Debussy's <i>La Mer</i>
	JUN 3–5	Elim Chan & Hilary Hahn: <i>Carmen</i> Fantasy
GROUP 2	JAN 27–30	MTT: Yuja Plays Rach Piano Concerto No. 2
	APR 29–MAY 1	Juraj Valčuha & Joshua Bell
	JUN 10, 12–13	Renée Fleming Sings R. Strauss' Four Last Songs
GROUP 3	OCT 26	Beethoven250: Piano Recital with Rudolf Buchbinder
	NOV 8	China Philharmonic Orchestra Performs Rachmaninoff
	JAN 24	Bach Collegium Japan Performs Mozart's Mass in C minor
	MAR 7	Carlos Miguel Prieto & Orquestra Sinfónica Nacional
GROUP 4	DEC 6	Chamber Music Recital: Batiashvili, Capuçon, & Thibaudet
	FEB 14	Piano Recital with Daniil Trifonov
	APR 5	Piano Recital: Jean-Yves Thibaudet Performs Debussy
GROUP 5	OCT 18	Mirga, Sheku Kanneh-Mason, & CBSO
	OCT 19	Mirga, Gidon Kremer, & CBSO
	NOV 10	Israel Philharmonic Performs Mozart & <i>The Rite of Spring</i>
	FEB 8	Violin Recital with Joshua Bell
	MAR 21	Piano Recital: Lang Lang Plays <i>Goldberg</i> Variations

DISCOVER THE SYMPHONY

ENRICH YOUR EXPERIENCE

Visit sfsymphony.org for resources like these

BEFORE

- **Podcasts**
Listen and learn about the music on the go! Visit sfsymphony.org/podcasts
- **Pre-concert lectures**
Discover the backstory & what to listen for from experts on the music
- **At a Glance**
Concert summaries
- **Pre-order**
an intermission drink

DURING

- **Artist Spotlights**
Learn more about the music directly from the artists in the program book
- **Program notes**
- **Special lobby exhibits**

AFTER

- **Off the Podium**
Post-concert Q&As with the artists
- **CD signings**
- **More about the Music**
Recommended readings & recordings featuring the music & musicians on the program
- **Broadcasts**
Hear the San Francisco Symphony broadcasts on KDFC 90.3 SF, 89.9 Napa, 104.9 San Jose, 103.9 Carmel, and streaming online at KDFC.com

SYMPHONY STORE

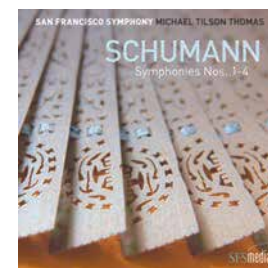
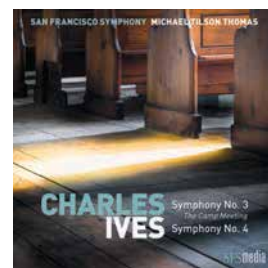
Choose from a wide variety of CDs, DVDs, literature, clothing, books, and more.

Wed–Fri, Noon–4pm,
and during all concerts
415.503.5321

REPEAT PERFORMANCE

With merchandise donated by Symphony patrons, Repeat Performance's proceeds support the San Francisco Symphony's programs throughout the Bay Area.

2436 Fillmore Street, SF
Mon 12PM–5PM
Tue–Fri 10:30AM–5:30PM
Sat 12PM–6:00PM
415.563.3123



DISCOVER SFS MEDIA

Featured releases from the 15-time Grammy-winning San Francisco Symphony

SFS Media recordings reflect the broad range of programming that showcases music by trailblazing composers and core classical masterworks. Recorded live in concert and engineered at Davies Symphony Hall, these audio recordings are released on hybrid SACD and in high-quality digital formats. Find them wherever music is sold and streamed. Learn more by visiting sfsymphony.org/sfsmedia.

SEASON PLAYLIST ON APPLE MUSIC

Join the Season playlist at applemusic.com/jointheseason only on Apple Music.

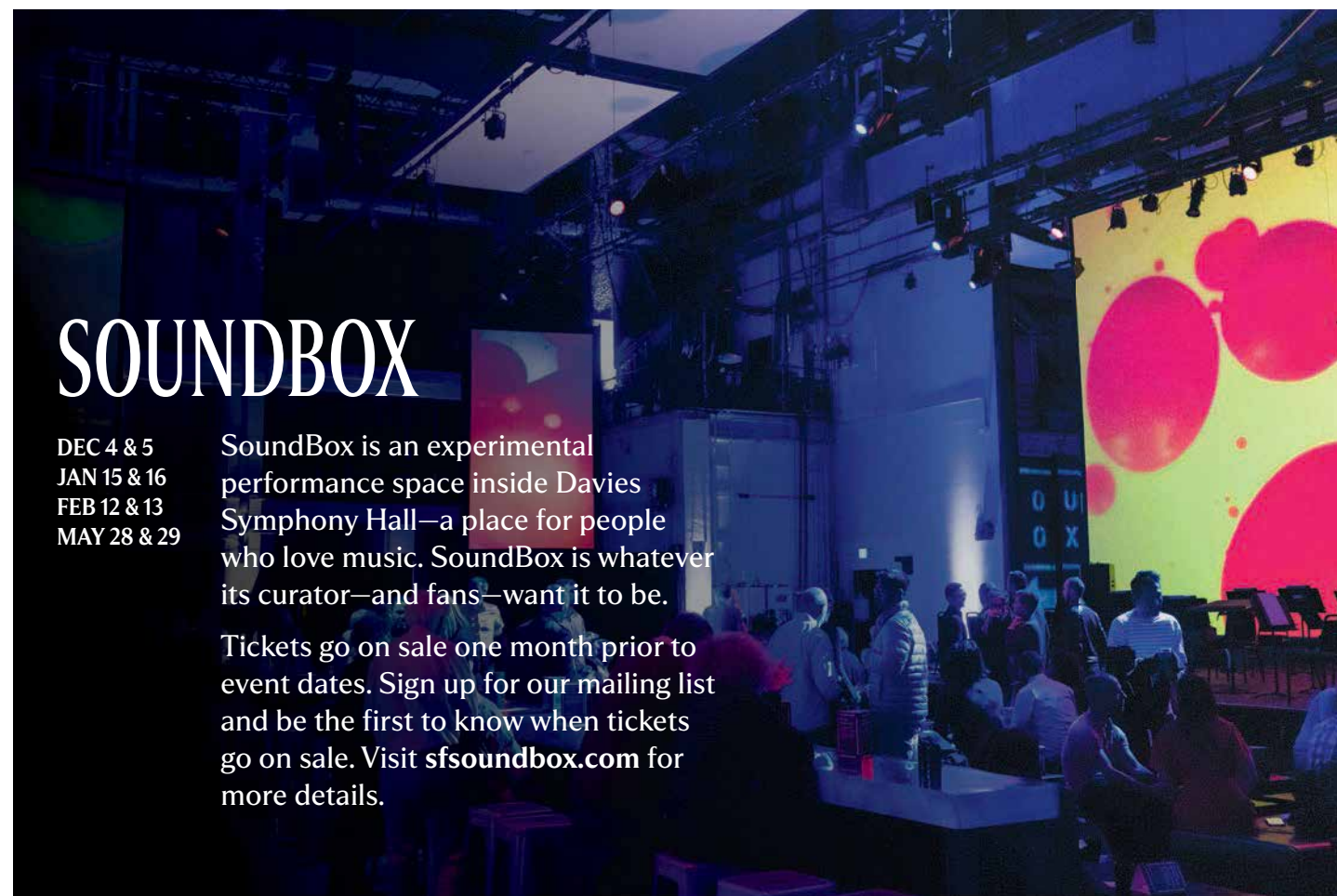
Live concert recordings selected from the season are available on all streaming and download platforms one month after performances.

SOUNDBOX

DEC 4 & 5
JAN 15 & 16
FEB 12 & 13
MAY 28 & 29

SoundBox is an experimental performance space inside Davies Symphony Hall—a place for people who love music. SoundBox is whatever its curator—and fans—want it to be.

Tickets go on sale one month prior to event dates. Sign up for our mailing list and be the first to know when tickets go on sale. Visit sfsoundbox.com for more details.



BECOME A DONOR

Gifts from donors make the music possible! Support artistic excellence, award-winning music education, and innovative community programs in the Bay Area and beyond by donating today.

HOW TO GIVE

1
ONLINE
Visit us at
sfsymphony.org/givenow

2
BY MAIL
Mail a check
(payable to The San
Francisco Symphony) to:

San Francisco Symphony
Davies Symphony Hall
201 Van Ness Avenue
San Francisco, CA 94102

3
BY PHONE
Call us at
415.503.5444

OTHER WAYS TO GIVE

Maximize your impact on classical music while furthering your financial goals through:

GIFT AND ESTATE PLANNING

Secure the San Francisco Symphony's future by including us in your estate plans

CORPORATE MATCHING

Double the impact of your gift with a company match

STOCK TRANSFERS

Avoid potential capital gains taxes through a donation of stock

IRA CHARITABLE ROLLOVER

If you are 70½ or older, you can make a transfer directly from your IRA to the San Francisco Symphony

For more information about these and other giving opportunities, visit sfsymphony.org/Support-Volunteer or contact us at **415.503.5444** or support@sfsymphony.org



EXPERIENCE THE WATTIS ROOM






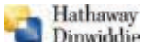















In The Wattis Room, we invite annual fund donors at the Baton Circle (\$2,500+) and Maestro's Circle (\$15,000+) levels to enjoy an exclusive dining experience within Davies Symphony Hall. Savor your experience at the San Francisco Symphony with pre-concert dining or cocktails and coffee at intermission.

For event inquiries in The Wattis Room, please contact **415.503.5333** or wattisroom@sfsymphony.org

THANK YOU TO OUR INSTITUTIONAL PARTNERS

The San Francisco Symphony is exceedingly grateful to its corporate, foundation, and government partners for their generous support of the outstanding concerts, impactful educational programs, and engaging community events we create for people across the San Francisco Bay Area and beyond.

CORPORATIONS

Second Century Partner		Season Partners	
			
Inaugural Partner		Official Airline	
\$100,000 and Above			
	COLLINS		
			
\$50,000 to \$99,999		\$35,000 to \$49,999	
			
			
			
			
\$15,000 to \$34,999			
			
			
			
			
			
			
			
			
			
			
			
			
			
\$10,000 to \$14,999			
			
			
			
			
			
			

FOUNDATIONS

\$100,000 and above The Eucalyptus Foundation The William & Flora Hewlett Foundation Koret Foundation League of American Orchestras The Bernard Osher Foundation	\$35,000 – \$49,999 Clarence E Heller Charitable Foundation William G Irwin Charity Foundation \$15,000 – \$34,999 Acacia Foundation Barbro Osher Pro Suecia Foundation Heising-Simons Foundation Hurlbut-Johnson Endowment Fund Alexander M and June L Maisin Foundation Newton and Rochelle Becker Charitable Trust	\$3,000 – \$14,999 The Amphion Foundation Frank A Campini Foundation The Aaron Copland Fund for Music Grammy Foundation Evelyn and Walter Haas, Jr. Fund John Brockway Huntington Foundation Robert Wood Johnson Foundation Julia Klumpke Estate Kresge Foundation Laney Thornton Foundation The Joseph and Mercedes McMicking Foundation E Nakamichi Foundation The Walther Foundation Harold L Wyman Foundation Zellerbach Family Foundation
--	--	--

PUBLIC FUNDING			MEDIA PARTNERS	
				
				

For more information on becoming an Institutional Partner, please contact Rosie Fraser at **415.503.5478** or rfraser@sfsymphony.org.

BE A PART OF ESA-PEKKA SALONEN'S INAUGURAL SEASON

**SUBSCRIBE OR RENEW BY MARCH 20, 2020
AND GET FREE TICKETS!***

WHEN YOU SUBSCRIBE OR RENEW TO...	YOU RECEIVE...
6 or more concerts	2 FREE Orchestral Series concerts
12 or more concerts	4 FREE Orchestral Series concerts
18 or more concerts	6 FREE Orchestral Series concerts 2 complimentary beverage vouchers 1 additional one-time seat upgrade

*Restrictions apply. See page 2 for details.
Offer expires March 20, 2020

Esa-Pekka Salonen and musician portraits Shayan Ashgarnia
Additional photography Stefan Cohen, Minna Hatinen, and Brandon Patoc

   @sfsymphony